

PARKING ADVISORY COMMITTEE MINUTES

**September 26, 2013
Large PCR, Administration Building**

The meeting was called to order by Chief Roseann Richard at 4:07 pm.

Present: *Chief Roseann Richard (Chair), Bob Brown, Deborah Bauer, Kathy Theobald, Meryl Chew*

Minute Taker: Ana Spinola

Guests: Cadets Kemal Abuhan and Elizabeth Duchetta, John Coyle, 1st Engineer TSGB

Not Present: *Roger Jaeckel, Pat Hollister, Brian Jewkes of Corps*

Old Business:

Update on Student Solar-Powered Electric Vehicle Car Charging Station

The power station installation experienced problems over the summer. The Facilities Department is working on these issues. The station is currently operating 24/7 in a non-solar mode. Additional informal locations on campus are available to charge electric vehicles. A project background overview was given to bring everyone current.

New Business:

Welcome New Members

The Chair welcomed new members present: Deborah Bauer of Student Affairs and Meryl Chew of ASCMA.

Recognitions

The Committee recognized and thanked Kathy Theobald of Administration & Finance for her two years of service.

Bicycle Storage Racks and Alternative Transportation – Cadets Kemal Abuhan and Elizabeth Duchetta

Cadet Abuhan expressed that we as a CSU need more work in the alternative transportation area. There are many cyclists in the maritime industry. We wish to focus on bringing commuters and enthusiasts together to enrich our lives.

Cadets Abuhan and Duchetta presented a PowerPoint called 'Bicycle Parking / Storage at CMA'. See attachment. Our current, most convenient bicycle storage is by the water; this area is harsh on our metals and tends to oxidize everything. The presentation focused on the positive aspects of cycling for

CMA and the need for better storage solutions as a step toward making cycling a viable commuter choice. Discussion followed.

There are some simple things we can do right away. We can move bike racks to increase security and improve access. Since building-style shelters are expensive, we can explore screened-in porches (covered cages). We can purchase single-post racks for two bicycles (low cost and small footprint).

The next steps for the committee would be to identify and prioritize the top three needs, and then to define locations and costs. To do that, a sub-committee would be formed. Cadet Abuhan offered to head the sub-committee and to recruit students for that committee. Cadet Abuhan and Chief Richard are to meet next week to get started.

Fall 2013 Stats on Parking Waivers

Ana explained the parking permit waiver process for new / incoming students. A sheet summarizing approvals and denials for the 2013 – 2014 academic year was provided. Out of 77 applications total, a subcommittee approved 43 and denied 34. See attachment for complete data on the number received, approved and denied for each category.

Last year's figure was around 50 approvals. To accommodate parking needs via endorsements for Corps/ASCMA Leadership and new faculty and staff, we reduced the number approved this year vs. last to ease the impact on parking. As we move forward, the committee may need to consider including 2nd year CMA students in this process to alleviate further parking congestion.

Discussion followed. It is rumored that first year students were asking upperclassmen to purchase a permit for them. This is against parking policy and is a Corps issue. Cadets caught doing this are fined \$350 (via a parking ticket) for fraudulently obtaining the permit and are reported to Leadership for disciplinary action.

Fall 2013 Stats on Sales of Student Semester Parking Permits

As of 9/26/13, we have sold 463 student semester permits (auto) for approximately 338 student parking spaces. The ratio of sold permits to spaces (463 / 338) is around 1.3 or 1.4 for our campus; this ratio is lower than most CSU's. The number of motorcycle permits sold is 47; these permit sales are increasing.

Adjournment:

The meeting was adjourned at 5:09 pm.

Respectfully Submitted,

Ana Spinola
Minute Taker

First Year Students Parking Petitions as of September 26, 2013
Divided by Category

	Received	Approved (Includes Motorcycle Only)	Approved for Motorcycle Only	Pending receipt of documentation	Committee 2nd review	Denied
Work	16	7				9
Veterans returning to school	11	11				0
Approved for Off Campus	22	20	1			2
Convenience	15	2	2			13
After school Activity	1					1
Family Care	10	2				8
ROTC	2	1				1
Totals	77	43	3	0	0	34



Bicycle/Parking and Storage at CMA



**Commuters and enthusiasts, Decrease Car
Parking Demand, Connect our off campus
student and faculty population.**



About US



- Our community as a whole has embraced using the bicycle as an alternative transportation tool to get to and from class.
- Our community through ARC and Collegiate Sports has created a vibrant campus that provides rich event programming for cycling enthusiasts





About US: Community



- Our community through club rush and other events here at the California Maritime Academy has indicated a need for secure bicycle storage on campus.
- During Campus tours and orientation, we have been asked about how and where we can store bicycles on campus.
- Parents are most interested in how their loved ones can move around campus and the city of Vallejo; bus and bicycle
- The cities of Vallejo, Benicia, through Sonoma County have embraced Intermodal transport through the use of Bus Service like (Sol Trans), the Vallejo Ferry, and Bicycling.





• 99% used, One sitting!

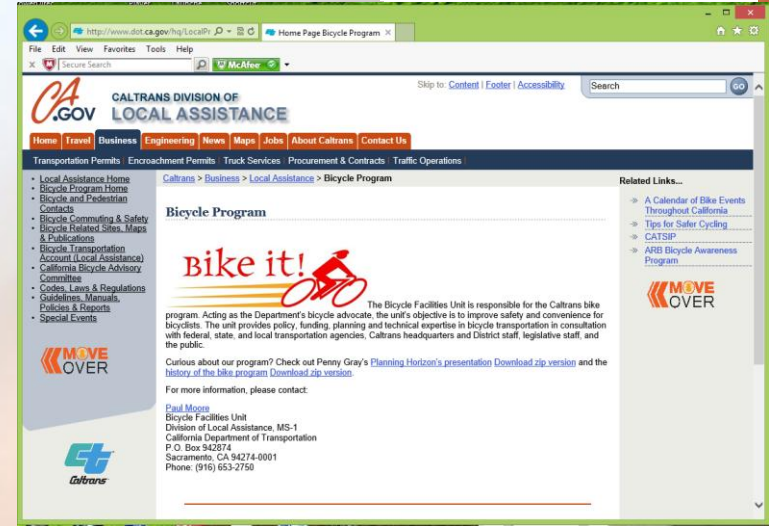
OUR SITUATION!



Challenges

- Communication
- Bicycle Safety
- Traffic

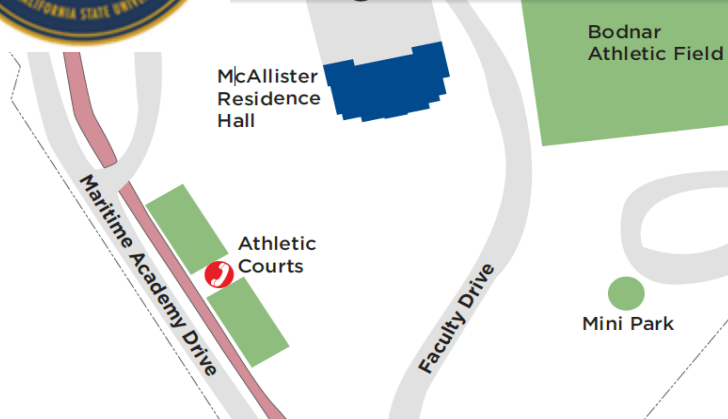
Welcome to Solano County Transit, the new consolidated transit system for Benicia and Vallejo. Keep an eye out for our new fleet of hybrid vehicles. Plan your trip on 511, the San Francisco Bay Area's trip planning platform with transit, traffic, rideshare and biking information. Dial 511, or visit www.511.org.





Challenges

- **Bicycle Safety, Traffic**





Challenges

- **Bicycle Safety, Traffic**

Bodnar



**Narrow Streets and
NO Bike Lane**



Challenges

Communications

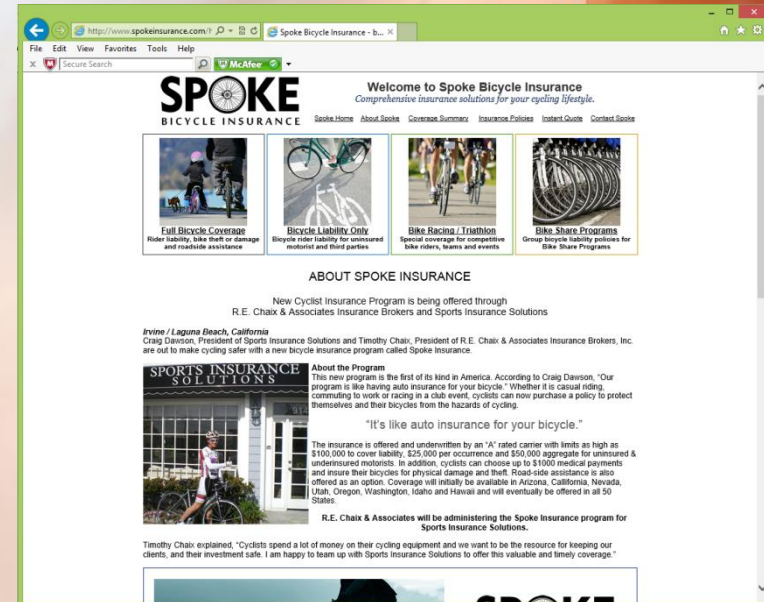
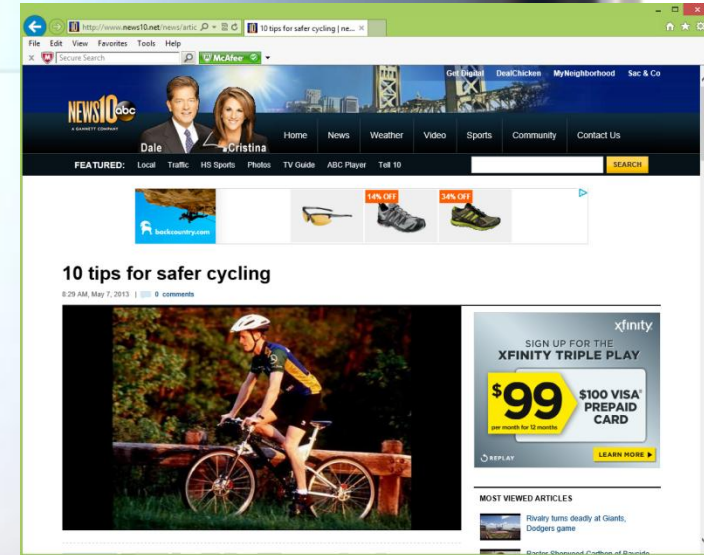
- **CMA has provided infrastructure for bicycle parking and is currently working with SolTrans on a study to research alternative transportation needs for our campus.**
- **However, there has been no area of focus to shed light on progress and upcoming facility, resources for our commuting, and bicycling community**
- **An Example: There is no dry, enclosed parking available on campus. Since we live close to the water, oxidation and rust has increased exponentially, thereby reducing the lifecycle of the bicycle.**



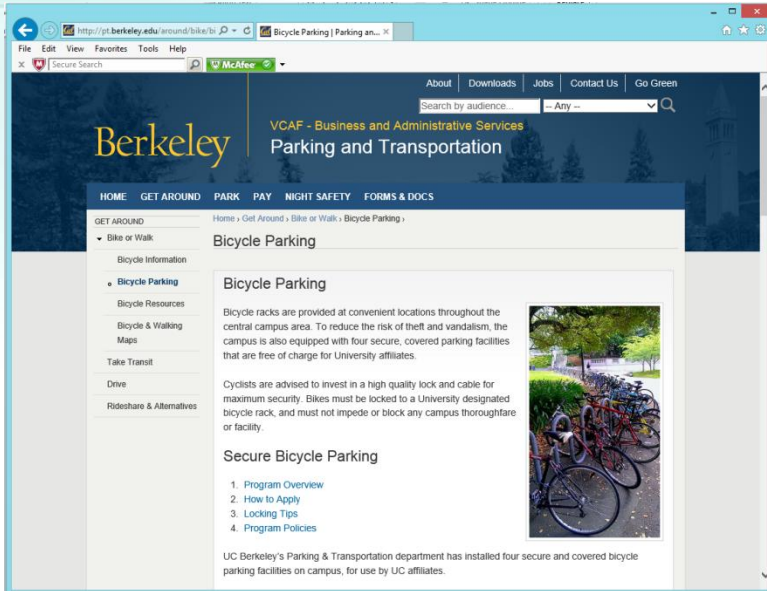


Advantages

- Promote Bicycle Safety through recognition and unification
- Bicycle Insurance, cataloging and documenting student bikes on campus
- Reduce on-campus vehicular traffic
- Decreases parking demand
- Reduce carbon emissions
- Support community alternative transportation initiatives



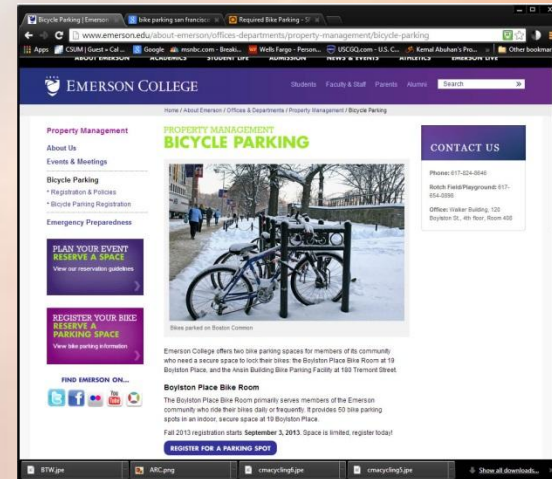
College examples:



“UC Berkeley’s Parking & Transportation department has installed four secure and covered bicycle parking facilities on campus, for use by UC affiliates. This program is offered free of charge on a first-come, first-served basis.”

(<http://pt.berkeley.edu/around/bike/bikeparking>)

“Emerson College of Boston offers two bike parking spaces for members of its community who need a secure space to lock their bikes: the Boylston Place Bike Room at 19 Boylston Place, and the Ansin Building Bike Parking Facility at 180 Tremont Street. (<http://www.emerson.edu/about-emerson/offices-departments/property-management/bicycle-parking>)”



A BIKE ROOM and Bicycle Parking! WE LOVE IT



PLAN

- **Work closely with the Parking Committee and form a subcommittee to study and address parking needs for cyclist on and off campus**
- **Create and Alternative Transportation Hub(Club) website**
- **Work Closely with CMA: Collect Data through Several Sources**
- **Develop a Plan and find a location to build an indoor, outdoor secure bicycle parking room**
- **Use this area to promote and educate our cycling population on safety and the use of alternative transportation**



Conclusion

The Future and Us:

1. Alleviates Parking Demand
2. Improve Air Quality
3. Decrease Auto Congestion
4. Exercise, and Economic Benefits
5. Continuous Routes
6. Intermodal Connections

Supported By Programs and Infrastructure

1. Community Building, in and off campus





References

What to Know about Bikes on Campus UCPD:

<http://police.berkeley.edu/prevention/bike.html#licensinglaw>

Bike Parking Planning Code

<http://www.sfbike.org/?planningcode>

New Parking at Santa Monica College: Not Just for Bikes

<http://la.streetsblog.org/2013/02/11/new-parking-at-santa-monica-college-not-just-for-bikes/>

Caltrans Bicycle Program

<http://www.dot.ca.gov/hq/LocalPrograms/bike/homepage.htm>

UC Berkeley Bicycle Information

<http://pt.berkeley.edu/around/bike/info>

*Contribution: 3/C Elizabeth Duchetta,
educhetta@csum.edu*

*Prepared by 1/C Kemal Abuhan
kabuhan@csum.edu*