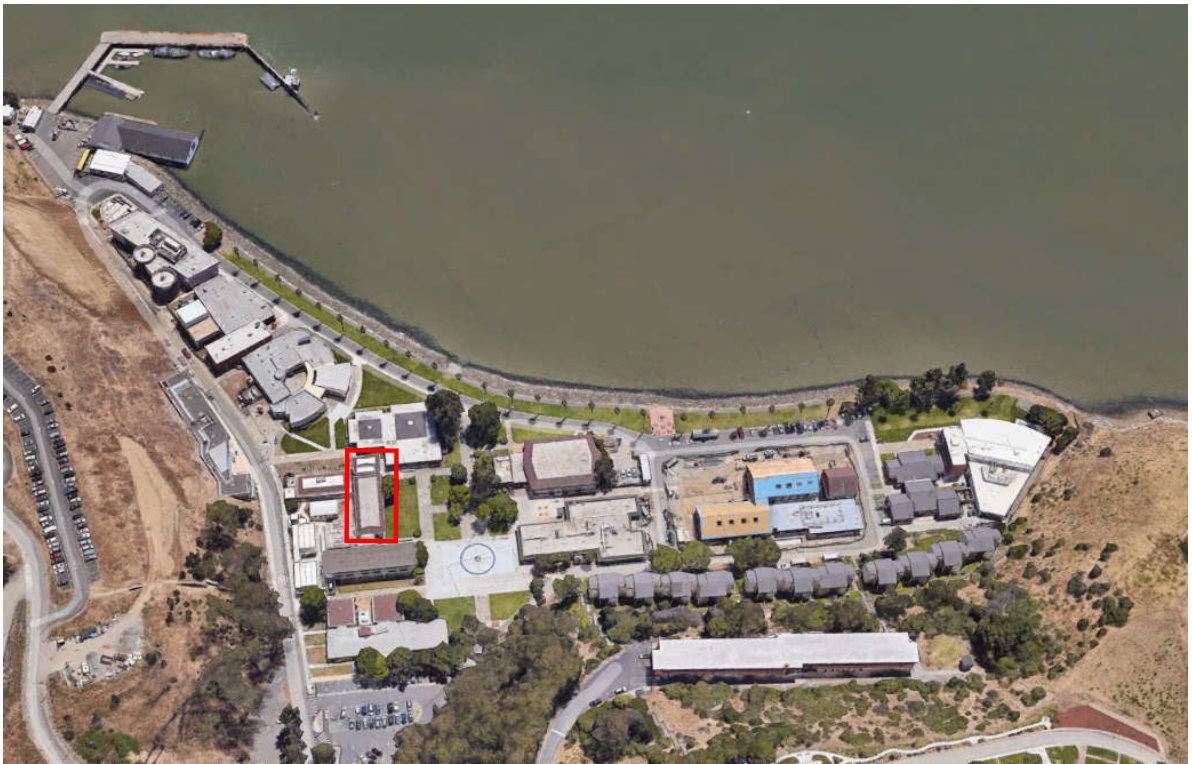


CALIFORNIA STATE UNIVERSITY MARITIME ACADEMY FACULTY OFFICE BUILDING HAZARDOUS MATERIALS SURVEY SUMMARY



Sampled for **asbestos** and **detected**
Sampled for **lead** and **detected**

This is a quick reference summary of a survey completed by Vista Environmental in October 2024. The complete report is available by contacting EH&S at safety@csum.edu. If unsure about ANY information contact EH&S prior to impacting suspect material.

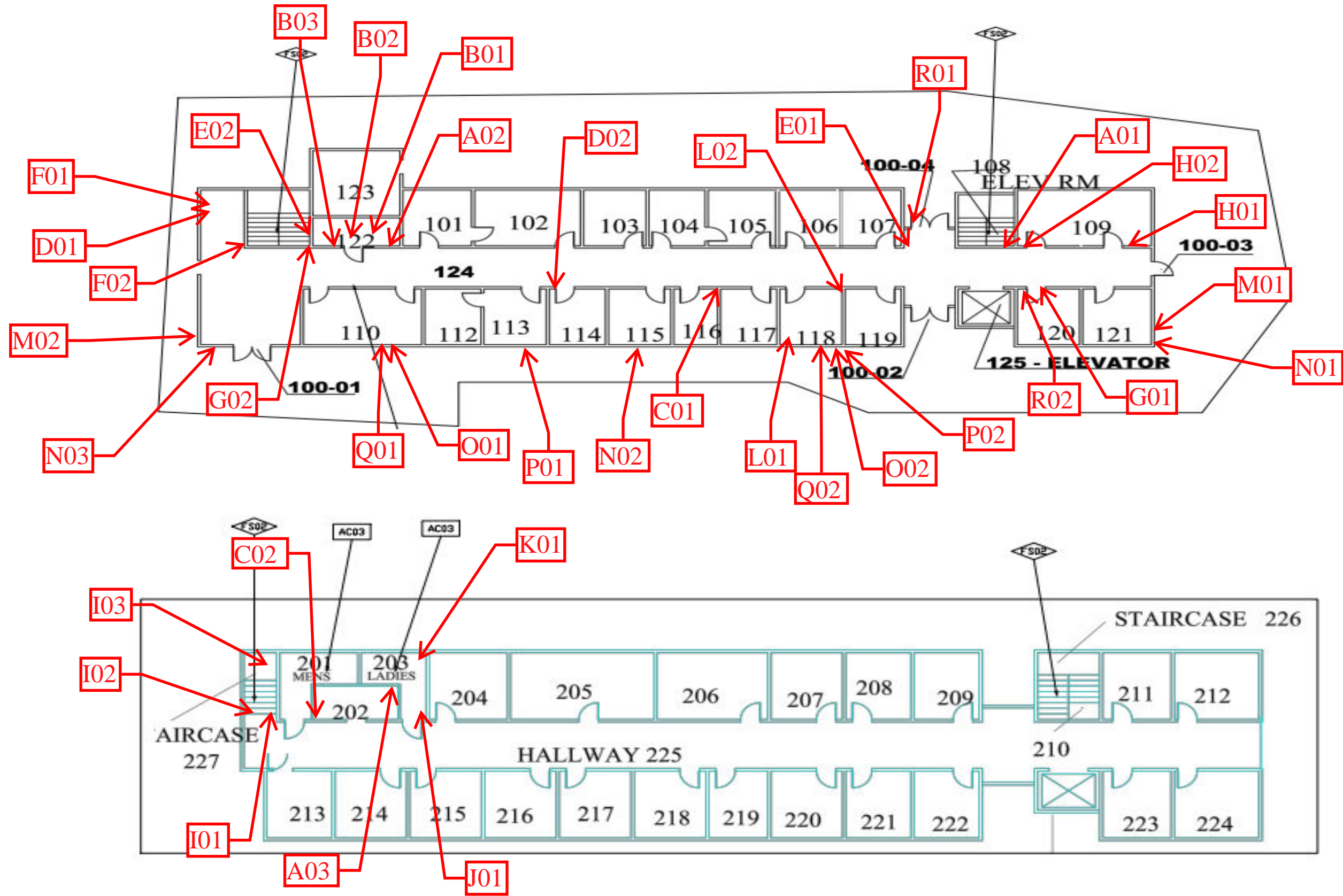
**CALIFORNIA STATE UNIVERSITY MARITIME ACADEMY
ADMINISTRATION BUILDING
HAZARDOUS MATERIALS SURVEY**

Positive Asbestos Location

MATERIAL	DESCRIPTION	LOCATION	ESTIMATED QUANTITY
Wallboard/Joint Compound	White/White	Throughout Walls and Ceilings	37,000 SF
Texture Coat	White, Medium, Ceiling	Room 122 Ceiling	200 SF
Vinyl Floor Tile/Mastic	12" White, Black Streaks/Black	Throughout Except Restrooms, Stairways, First Floor Hallway East and West, Rooms 101, 104,108, 109A, 109B, 118, 122, and 123.	7,400 SF
Vinyl Floor Tile/Mastic	12" Gray, White Streaks/Yellow & Brown	First Floor Hallway East and West	900 SF
Vinyl Floor Tile/Mastic	12" White, Beige Streaks/Yellow & Brown	Rooms 101, 104, 109A, and 109B	600 SF
Texture Coat	White, Small Ceiling	Second Floor Staircase 227 Ceiling	400 SF
Vinyl Floor Tile/Mastic	12" White, Black Specs/Yellow & Black	Room 118	150 SF
Sealant	Black, Window Frames	Exterior Dark Aluminum Window Frames and Store Front	60 SF (700 LF)

Positive Asbestos

HOMO ID	MATERIAL	DESCRIPTION	LOCATION	CAL/OSHA CLASS	BAAQMD CATEGORY
A	Wallboard/Joint Compound	White/White	Throughout Walls and Ceilings	Class II	Friable (RACM when Removed)
B	Texture Coat	White, Medium, Ceiling	Room 122 Ceiling	Class II	Friable (RACM when Removed)
D	Vinyl Floor Tile/Mastic	12" White, Black Streaks/Black	Throughout Except Restrooms, Stairways, First Floor Hallway East and West, Rooms 101, 104,108, 109A, 109B, 118, 122, and 123.	Class II	Category I - Non-Friable
G	Vinyl Floor Tile/Mastic	12" Gray, White Streaks/Yellow & Brown	First Floor Hallway East and West	Class II	Category I - Non-Friable
H	Vinyl Floor Tile/Mastic	12" White, Beige Streaks/Yellow & Brown	Rooms 101, 104, 109A, and 109B	Class II	Category I - Non-Friable
I	Texture Coat	White, Small Ceiling	Second Floor Staircase 227 Ceiling	Class II	Friable (RACM when Removed)
L	Vinyl Floor Tile/Mastic	12" White, Black Specs/Yellow & Black	Room 118	Class II	Category I - Non-Friable
P	Sealant	Black, Window Frames	Exterior Dark Aluminum Window Frames and Store Front	Class II	Category I - Non-Friable



XRF Positive Lead Locations

ROOM	COMPONENT	SUBSTRATE	COLOR	CONDITION	Pb	UNITS
Outside	Lower Wall	Stucco	Off White	Intact	0.1	mg/cm ²
Outside	Downspout	Metal	Off White	Intact	0.1	mg/cm ²
Outside	Downspout	Metal	Off White	Intact	0.1	mg/cm ²
Outside	Window Frame	Wood	Beige	Intact	0.1	mg/cm ²
Outside	Window Frame	Wood	Beige	Intact	0.2	mg/cm ²
Outside	Window Sill	Metal	Beige	Intact	0.1	mg/cm ²
Outside	Window Sill	Metal	Beige	Intact	0.2	mg/cm ²
Outside	Door	Metal	Dark Brown	Intact	0.1	mg/cm ²
Outside	Door	Metal	Dark Brown	Intact	0.1	mg/cm ²
Outside	Window Frame	Metal	Dark Brown	Intact	0.2	mg/cm ²
Outside	Window Frame	Metal	Dark Brown	Intact	0.2	mg/cm ²
Inside	Lower Wall	Drywall	Off White	Intact	0.2	mg/cm ²
Inside	Lower Wall	Drywall	Off White	Intact	0.1	mg/cm ²
Inside	Door	Wood	Beige	Intact	0.1	mg/cm ²
Inside	Door Frame	Wood	Beige	Intact	0.1	mg/cm ²
Inside	Baseboard	Vinyl	Tan	Intact	0.2	mg/cm ²
Inside	Baseboard	Vinyl	Tan	Intact	0.3	mg/cm ²
Inside	Baseboard	Vinyl	Black	Intact	0.1	mg/cm ²
Inside	Baseboard	Vinyl	Black	Intact	0.2	mg/cm ²
Inside	Lower Wall	Drywall	White	Intact	0.1	mg/cm ²
Inside	Lower Wall	Drywall	White	Intact	0.2	mg/cm ²
Inside	Ceiling	Tile	White	Intact	0.1	mg/cm ²
Inside	Ceiling	Tile	White	Intact	0.1	mg/cm ²
Inside	Stringer	Wood	Tan	Intact	1.8	mg/cm²
Inside	Stringer	Wood	Tan	Intact	19.1	mg/cm²

XRF Positive Lead Locations

ROOM	COMPONENT	SUBSTRATE	COLOR	CONDITION	Pb	UNITS
Inside	Lower Wall	Drywall	Off White	Intact	0.1	mg/cm ²
Inside	Door Frame	Wood	Beige	Intact	0.1	mg/cm ²
Inside	Door Frame	Wood	Beige	Intact	0.1	mg/cm ²
Inside	Baseboard	Vinyl	Tan	Intact	0.2	mg/cm ²
Inside	Baseboard	Vinyl	Tan	Intact	0.1	mg/cm ²
Inside	Counter	Wood	Beige	Intact	0.2	mg/cm ²
Inside	Counter	Wood	Beige	Intact	0.2	mg/cm ²
Inside	Lower Wall	Ceramic	Tan	Intact	0.5	mg/cm ²
Inside	Floor	Ceramic	Beige	Intact	0.1	mg/cm ²
Outside	Soffit	Wood	Off White	Intact	0.1	mg/cm ²
Outside	Fascia	Wood	Off White	Intact	0.1	mg/cm ²
Outside	Flashing	Metal	Dark Brown	Intact	0.1	mg/cm ²

Bold = Lead Based

XFR Lead Sample Locations

READING NO.	ROOM	COMPONENT	SUBSTRATE	COLOR	CONDITION	RESULTS	PbC	UNITS
96		Calibrate				Negative	0.8	mg/cm2
97		Calibrate				Negative	0.8	mg/cm2
98		Calibrate				Negative	0.8	mg/cm2
179	Outside	Lower Wall	Stucco	Off White	Intact	Negative	0	mg/cm2
180	Outside	Lower Wall	Stucco	Off White	Intact	Negative	0.1	mg/cm2
181	Outside	Downspout	Metal	Off White	Intact	Negative	0.1	mg/cm2
182	Outside	Downspout	Metal	Off White	Intact	Negative	0.1	mg/cm2
183	Outside	Window Frame	Wood	Beige	Intact	Negative	0.1	mg/cm2
184	Outside	Window Frame	Wood	Beige	Intact	Negative	0.2	mg/cm2
185	Outside	Window Sill	Metal	Beige	Intact	Negative	0.1	mg/cm2
186	Outside	Window Sill	Metal	Beige	Intact	Negative	0.2	mg/cm2
187	Outside	Door	Metal	Dk-Brown	Intact	Negative	0.1	mg/cm2
188	Outside	Door	Metal	Dk-Brown	Intact	Negative	0.1	mg/cm2
189	Outside	Window Frame	Metal	Dk-Brown	Intact	Negative	0.2	mg/cm2
190	Outside	Window Frame	Metal	Dk-Brown	Intact	Negative	0.2	mg/cm2
191	Inside	Lower Wall	Drywall	Off White	Intact	Negative	0.2	mg/cm2
192	Inside	Lower Wall	Drywall	Off White	Intact	Negative	0.1	mg/cm2
193	Inside	Door	Wood	Beige	Intact	Negative	0.1	mg/cm2
194	Inside	Door	Wood	Beige	Intact	Negative	0	mg/cm2
195	Inside	Door Frame	Wood	Beige	Intact	Negative	0	mg/cm2
196	Inside	Door Frame	Wood	Beige	Intact	Negative	0.1	mg/cm2
197	Inside	Baseboard	Vinyl	Tan	Intact	Negative	0.2	mg/cm2
198	Inside	Baseboard	Vinyl	Tan	Intact	Negative	0.3	mg/cm2
199	Inside	Baseboard	Vinyl	Black	Intact	Negative	0.1	mg/cm2
200	Inside	Baseboard	Vinyl	Black	Intact	Negative	0.2	mg/cm2
201	Inside	Lower Wall	Drywall	White	Intact	Negative	0.1	mg/cm2
202	Inside	Lower Wall	Drywall	White	Intact	Negative	0.2	mg/cm2
203	Inside	Ceiling	Tile	White	Intact	Negative	0.1	mg/cm2

This data is a screening of lead levels and provides results that are generally representative of typical conditions, but are not inclusive of all painted/coated surfaces at the Project Site.

XRF Lead Sample Locations

READING NO.	ROOM	COMPONENT	SUBSTRATE	COLOR	CONDITION	RESULTS	PbC	UNITS
204	Inside	Ceiling	Tile	White	Intact	Negative	0.1	mg/cm ²
205	Inside	Stringer	Wood	Tan	Intact	Positive	1.8	mg/cm ²
206	Inside	Stringer	Wood	Tan	Intact	Positive	19.1	mg/cm ²
207	Inside	Lower Wall	Drywall	Off White	Intact	Negative	0	mg/cm ²
208	Inside	Lower Wall	Drywall	Off White	Intact	Negative	0.1	mg/cm ²
209	Inside	Door	Wood	Beige	Intact	Negative	0	mg/cm ²
210	Inside	Door	Wood	Beige	Intact	Negative	0	mg/cm ²
211	Inside	Door Frame	Wood	Beige	Intact	Negative	0.1	mg/cm ²
212	Inside	Door Frame	Wood	Beige	Intact	Negative	0.1	mg/cm ²
213	Inside	Baseboard	Vinyl	Tan	Intact	Negative	0.2	mg/cm ²
214	Inside	Baseboard	Vinyl	Tan	Intact	Negative	0.1	mg/cm ²
215	Inside	Counter	Wood	Beige	Intact	Negative	0.2	mg/cm ²
216	Inside	Counter	Wood	Beige	Intact	Negative	0.2	mg/cm ²
217	Inside	Lower Wall	Ceramic	Tan	Intact	Negative	0	mg/cm ²
218	Inside	Lower Wall	Ceramic	Tan	Intact	Negative	0.5	mg/cm ²
219	Inside	Floor	Ceramic	Beige	Intact	Negative	0	mg/cm ²
220	Inside	Floor	Ceramic	Beige	Intact	Negative	0.1	mg/cm ²
221	Outside	Soffit	Wood	Off White	Intact	Negative	0	mg/cm ²
222	Outside	Soffit	Wood	Off White	Intact	Negative	0.1	mg/cm ²
223	Outside	Fascia	Wood	Off White	Intact	Negative	0.1	mg/cm ²
224	Outside	Fascia	Wood	Off White	Intact	Negative	0	mg/cm ²
225	Outside	Flashing	Metal	Dk-Brown	Intact	Negative	0.1	mg/cm ²
226	Outside	Flashing	Metal	Dk-Brown	Intact	Negative	0	mg/cm ²
328		Calibrate				Negative	0.9	mg/cm ²
329		Calibrate				Negative	0.9	mg/cm ²
330		Calibrate				Positive	1	mg/cm ²

The above list are ALL the materials sampled and tested by XRF for lead. The positive materials are in red. The non-detected for lead materials are in black. If you cannot positively identify the material you need to impact through the above inventory, do not disturb and contact EH&S for further sampling or guidance. The materials not listed were not sampled and must be assumed lead containing until proven not by testing

This data is a screening of lead levels and provides results that are generally representative of typical conditions, but are not inclusive of all painted/coated surfaces at the Project Site.