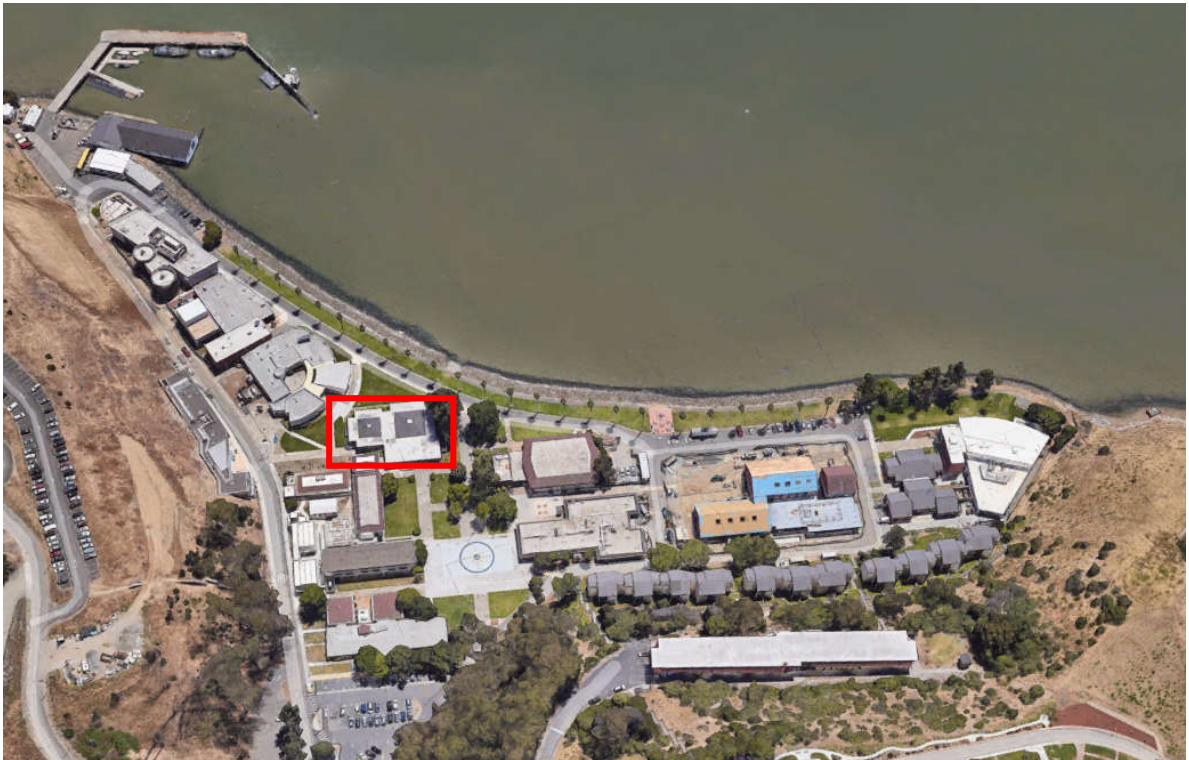


**CALIFORNIA STATE UNIVERSITY MARITIME ACADEMY  
LIBRARY  
HAZARDOUS MATERIALS SURVEY SUMMARY**



Sampled for **asbestos** and **detected**  
Sampled for **lead** and **detected**

**This is a quick reference summary of a survey completed by Vista Environmental in October 2024. The complete report is available by contacting EH&S at [safety@csum.edu](mailto:safety@csum.edu). If unsure about ANY information contact EH&S prior to impacting suspect material.**

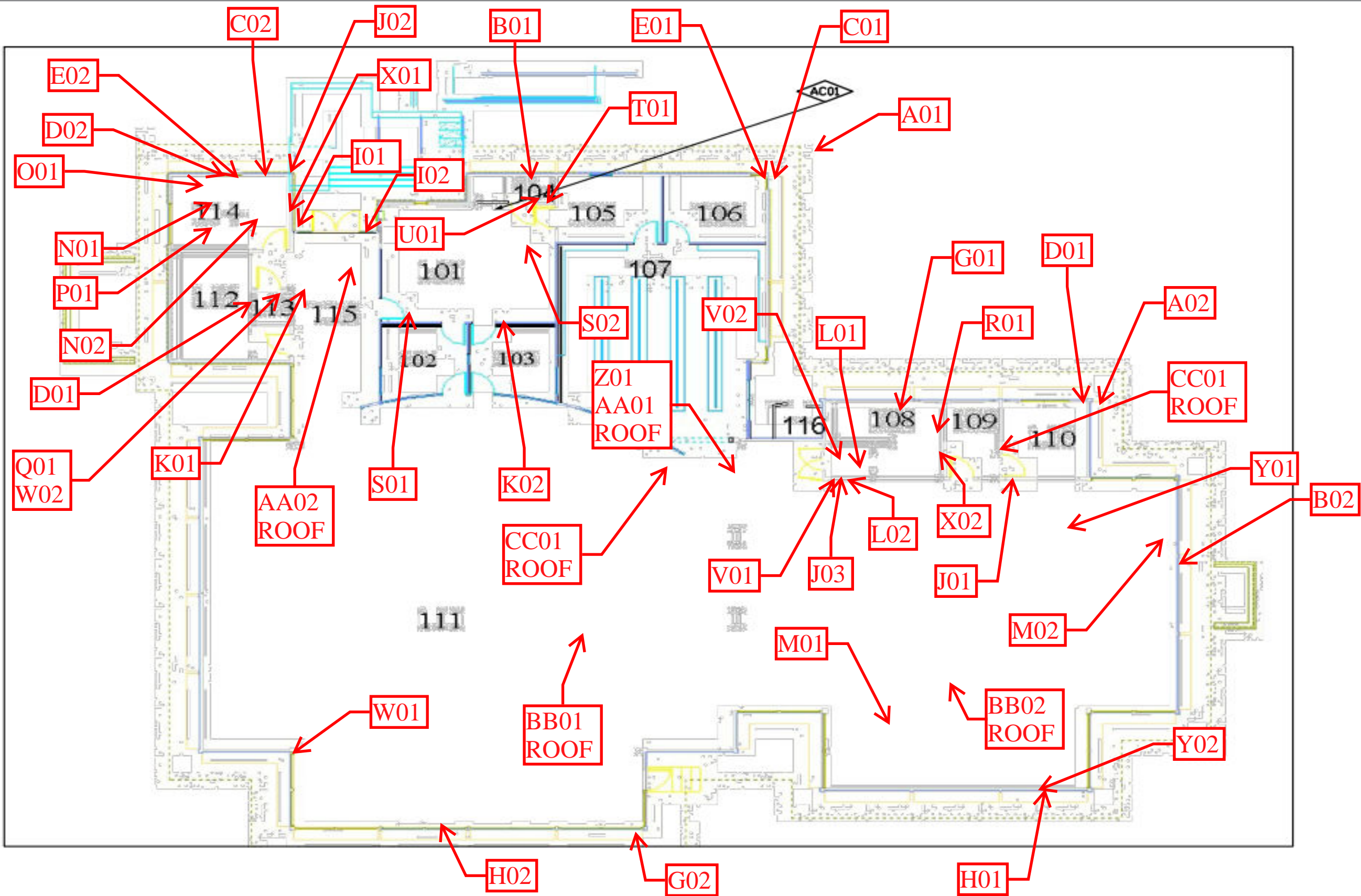
**Positive Asbestos Locations**

The results of the bulk samples collected for asbestos, and analyzed by PLM, or assumed, indicate that detectable concentrations of asbestos are present in the following materials:

HOMO ID	MATERIAL	DESCRIPTION	LOCATION	CAL/OSHA CLASS	BAAQMD CATEGORY
D	Sealant	White, Wood Trim Sealant	Exterior - Wood Trim at Brick and Stucco	Class II	Category I - Non-Friable
I	Sealant	Gray, Goopy, Storefront	Main Entrance Storefront	Class II	Friable (RACM when Removed)
J	Wallboard/Joint Compound	White/White	Throughout	Class II	Category I - Non-Friable
T	Vinyl Floor Tile/Mastic	9" White/Black	Office Closet 104	Class II	Category I - Non-Friable
CC	Roofing	Silver & Black	Throughout Roofing Except Shingled. According to the lab asbestos is in a white fibrous layer.	Class II	Friable (RACM when Removed)

The results of the bulk samples collected for asbestos, and analyzed by PLM, indicate that detectable concentrations of asbestos are not present in the following materials:

HOMOGENEOUS ID	MATERIAL	DESCRIPTION	# OF SAMPLES
A	Concrete	Gray, Foundation	2
B	Brick/Mortar	Brown/Gray	2
C	Sealant	Gray, Windows Frame	2
E	Glazing	Black, Window	2
F	Paint/Stucco	White/Gray, Patch	1
G	Paint/Stucco	White/Gray, Panels	2
H	Glazing	Gray, Window	2
K	Basecove/Mastic	4" Gray/Beige	2
L	Acoustical Ceiling Tile/Mastic	12" White, Fissured, Purple/Brown	2
M	Mastic	Yellow, Carpet Square	2
N	Sealant	Gray, HVAC, Outer Seam	2
O	Flex Connector	White	1
P	Tape/Sealant	White, Duct	1
Q	Vinyl Floor Tile/Mastic	12" Gray/Yellow	1
R	Mortar/Grout	Gray/Gray, Ceramic Wall & Floor	1
S	Vinyl Floor Tile/Mastic	12" Off White/Yellow	2
U	Basecove/Mastic	4" White/Beige	1
V	Acoustical Ceiling Tile/Mastic	2"x4", Random Pinhole/Beige	2
W	Basecove/Mastic	4" Brown/Beige	2
X	Firestop	Red	2
Y	Vinyl Floor Tile/Mastic	12" Yellow/Yellow	2
Z	Packing	Black, HVAC	1
AA	Mastic	Gray & Black, Roof	2
BB	Shingles/Underlayment	Black/Black, 3 Tab	2



***XRF Positive Lead Locations***

ROOM	COMPONENT	SUBSTRATE	COLOR	CONDITION	Pb	UNITS
Outside	Post	Wood	Dark Brown	Intact	0.1	mg/cm <sup>2</sup>
Outside	Post	Wood	Dark Brown	Intact	0.1	mg/cm <sup>2</sup>
Outside	Beam	Wood	Dark Brown	Intact	0.2	mg/cm <sup>2</sup>
Outside	Beam	Wood	Dark Brown	Intact	0.2	mg/cm <sup>2</sup>
Outside	Soffit	Wood	Dark Brown	Intact	0.2	mg/cm <sup>2</sup>
Outside	Fascia	Metal	Dark Brown	Intact	0.1	mg/cm <sup>2</sup>
Outside	Fascia	Metal	Dark Brown	Intact	0.1	mg/cm <sup>2</sup>
Outside	Lower Wall	Wood	Beige	Intact	0.1	mg/cm <sup>2</sup>
Outside	Lower Wall	Wood	Dark Brown	Intact	0.1	mg/cm <sup>2</sup>
Outside	Lower Wall	Wood	Dark Brown	Intact	0.1	mg/cm <sup>2</sup>
Outside	Lower Wall	Concrete	Beige	Intact	0.1	mg/cm <sup>2</sup>
Outside	Lower Wall	Concrete	Beige	Intact	0.1	mg/cm <sup>2</sup>
Outside	Vent	Metal	Beige	Intact	0.3	mg/cm <sup>2</sup>
Outside	Vent	Metal	Beige	Intact	0.1	mg/cm <sup>2</sup>
Outside	Downspout	Metal	Dark Brown	Intact	0.2	mg/cm <sup>2</sup>
Outside	Downspout	Metal	Dark Brown	Intact	0.1	mg/cm <sup>2</sup>
Outside	Window Sill	Wood	Dark Brown	Deteriorated	0.1	mg/cm <sup>2</sup>
Outside	Window Sill	Wood	Dark Brown	Deteriorated	0.1	mg/cm <sup>2</sup>
Outside	Door	Wood	Dark Brown	Deteriorated	0.1	mg/cm <sup>2</sup>
Outside	Vent	Metal	Dark Brown	Intact	0.1	mg/cm <sup>2</sup>
Outside	Vent	Metal	Dark Brown	Intact	0.1	mg/cm <sup>2</sup>
Inside	Lower Wall	Drywall	Off White	Intact	0.8	mg/cm <sup>2</sup>
Inside	Lower Wall	Drywall	Off White	Intact	0.3	mg/cm <sup>2</sup>
Inside	Lower Wall	Ceramic	Off White	Intact	0.2	mg/cm <sup>2</sup>
Inside	Lower Wall	Ceramic	Off White	Intact	0.3	mg/cm <sup>2</sup>
Inside	Lower Wall	Drywall	Off White	Intact	0.2	mg/cm <sup>2</sup>
Inside	Baseboard	Vinyl	Gray	Intact	0.2	mg/cm <sup>2</sup>
Inside	Baseboard	Vinyl	Dark Gray	Intact	0.2	mg/cm <sup>2</sup>
Inside	Baseboard	Vinyl	Dark Gray	Intact	0.1	mg/cm <sup>2</sup>
Inside	Door Casing	Metal	Off White	Intact	0.1	mg/cm <sup>2</sup>

*XRF Positive Lead Locations*

<b>ROOM</b>	<b>COMPONENT</b>	<b>SUBSTRATE</b>	<b>COLOR</b>	<b>CONDITION</b>	<b>Pb</b>	<b>UNITS</b>
Roof	Pipe	Tile	Silver	Intact	64	mg/cm <sup>2</sup>
Outside	Post	Wood	Dark Brown	Intact	0.1	mg/cm <sup>2</sup>
Outside	Post	Wood	Dark Brown	Intact	0.1	mg/cm <sup>2</sup>
Outside	Beam	Wood	Dark Brown	Intact	0.2	mg/cm <sup>2</sup>
Outside	Beam	Wood	Dark Brown	Intact	0.2	mg/cm <sup>2</sup>
Outside	Soffit	Wood	Dark Brown	Intact	0.2	mg/cm <sup>2</sup>
Outside	Fascia	Metal	Dark Brown	Intact	0.1	mg/cm <sup>2</sup>
Outside	Fascia	Metal	Dark Brown	Intact	0.1	mg/cm <sup>2</sup>
Outside	Lower Wall	Wood	Beige	Intact	0.1	mg/cm <sup>2</sup>
Outside	Lower Wall	Wood	Dark Brown	Intact	0.1	mg/cm <sup>2</sup>

***XRF Positive Lead Locations***

ROOM	COMPONENT	SUBSTRATE	COLOR	CONDITION	Pb	UNITS
Outside	Lower Wall	Wood	Dark Brown	Intact	0.1	mg/cm <sup>2</sup>
Outside	Lower Wall	Concrete	Beige	Intact	0.1	mg/cm <sup>2</sup>
Outside	Lower Wall	Concrete	Beige	Intact	0.1	mg/cm <sup>2</sup>
Outside	Vent	Metal	Beige	Intact	0.3	mg/cm <sup>2</sup>
Outside	Vent	Metal	Beige	Intact	0.1	mg/cm <sup>2</sup>
Outside	Downspout	Metal	Dark Brown	Intact	0.2	mg/cm <sup>2</sup>
Outside	Downspout	Metal	Dark Brown	Intact	0.1	mg/cm <sup>2</sup>
Outside	Window Sill	Wood	Dark Brown	Deteriorated	0.1	mg/cm <sup>2</sup>
Outside	Window Sill	Wood	Dark Brown	Deteriorated	0.1	mg/cm <sup>2</sup>
Outside	Door	Wood	Dark Brown	Deteriorated	0.1	mg/cm <sup>2</sup>
Outside	Vent	Metal	Dark Brown	Intact	0.1	mg/cm <sup>2</sup>
Outside	Vent	Metal	Dark Brown	Intact	0.1	mg/cm <sup>2</sup>
Inside	Lower Wall	Drywall	Off White	Intact	0.8	mg/cm <sup>2</sup>
Inside	Lower Wall	Drywall	Off White	Intact	0.3	mg/cm <sup>2</sup>
Inside	Lower Wall	Ceramic	Off White	Intact	0.2	mg/cm <sup>2</sup>
Inside	Lower Wall	Ceramic	Off White	Intact	0.3	mg/cm <sup>2</sup>
Inside	Lower Wall	Drywall	Off White	Intact	0.2	mg/cm <sup>2</sup>
Inside	Baseboard	Vinyl	Gray	Intact	0.2	mg/cm <sup>2</sup>
Inside	Baseboard	Vinyl	Dark Gray	Intact	0.2	mg/cm <sup>2</sup>
Inside	Baseboard	Vinyl	Dark Gray	Intact	0.1	mg/cm <sup>2</sup>
Inside	Door Casing	Metal	Off White	Intact	0.1	mg/cm <sup>2</sup>
Inside	Baseboard	Metal	Beige	Intact	0.3	mg/cm <sup>2</sup>
Inside	Baseboard	Metal	Beige	Intact	0.3	mg/cm <sup>2</sup>
Inside	Post	Wood	Varnish	Intact	0.2	mg/cm <sup>2</sup>
Inside	Window Sill	Wood	Light Brown	Intact	0.1	mg/cm <sup>2</sup>
Inside	Window Sill	Wood	Light Brown	Intact	0.1	mg/cm <sup>2</sup>
Inside	Lower Wall	Drywall	Gray	Intact	0.1	mg/cm <sup>2</sup>
Inside	Lower Wall	Drywall	Gray	Intact	0.1	mg/cm <sup>2</sup>
Inside	Counter	Wood	Varnish	Intact	0.1	mg/cm <sup>2</sup>
Inside	Counter	Wood	Varnish	Intact	0.1	mg/cm <sup>2</sup>
Inside	Lower Wall	Drywall	Off White	Intact	0.1	mg/cm <sup>2</sup>
Inside	Lower Wall	Drywall	Off White	Intact	0.1	mg/cm <sup>2</sup>
Inside	Beam	Wood	Brown	Intact	0.2	mg/cm <sup>2</sup>
Inside	Beam	Wood	Brown	Intact	0.3	mg/cm <sup>2</sup>
Inside	Beam	Wood	Varnish	Intact	0.2	mg/cm <sup>2</sup>
Inside	Beam	Wood	Varnish	Intact	0.1	mg/cm <sup>2</sup>
Inside	Baseboard	Vinyl	Dark Brown	Intact	0.2	mg/cm <sup>2</sup>
Inside	Lower Wall	Wood	Varnish	Intact	0.1	mg/cm <sup>2</sup>
Inside	Door	Wood	Light Gray	Intact	0.1	mg/cm <sup>2</sup>
Inside	Lower Wall	Drywall	Light Green	Intact	0.1	mg/cm <sup>2</sup>
Inside	Window Frame	Wood	Light Blue	Intact	0.2	mg/cm <sup>2</sup>



***XRF Positive Lead Locations***

<b>ROOM</b>	<b>COMPONENT</b>	<b>SUBSTRATE</b>	<b>COLOR</b>	<b>CONDITION</b>	<b>Pb</b>	<b>UNITS</b>
Inside	Window Frame	Wood	Light Blue	Intact	0.1	mg/cm <sup>2</sup>
Inside	Railing	Wood	Light Gray	Intact	0.1	mg/cm <sup>2</sup>
Inside	Ceiling	Tile	White	Intact	0.1	mg/cm <sup>2</sup>
Inside	Ceiling	Tile	White	Intact	0.1	mg/cm <sup>2</sup>
Inside	Ceiling	Tile	White	Intact	0.1	mg/cm <sup>2</sup>
Roof	Roofing	Other	Silver	Intact	0.2	mg/cm <sup>2</sup>

*XFR Lead sampling locations*

READING NO.	ROOM	COMPONENT	SUBSTRATE	COLOR	CONDITION	RESULTS	PbC	UNITS
96		Calibrate				Negative	0.8	mg/cm2
97		Calibrate				Negative	0.8	mg/cm2
98		Calibrate				Negative	0.8	mg/cm2
99	Outside	Post	Wood	Dk-Brown	Intact	Negative	0.1	mg/cm2
100	Outside	Post	Wood	Dk-Brown	Intact	Negative	0.1	mg/cm2
101	Outside	Beam	Wood	Dk-Brown	Intact	Negative	0.2	mg/cm2
102	Outside	Beam	Wood	Dk-Brown	Intact	Negative	0.2	mg/cm2
103	Outside	Soffit	Wood	Dk-Brown	Intact	Negative	0.2	mg/cm2
104	Outside	Soffit	Wood	Dk-Brown	Intact	Negative	0	mg/cm2
105	Outside	Fascia	Metal	Dk-Brown	Intact	Negative	0.1	mg/cm2
106	Outside	Fascia	Metal	Dk-Brown	Intact	Negative	0.1	mg/cm2
107	Outside	Lower Wall	Stucco	Beige	Intact	Negative	0	mg/cm2
108	Outside	Lower Wall	Stucco	Beige	Intact	Negative	0	mg/cm2
109	Outside	Lower Wall	Wood	Beige	Intact	Negative	0.1	mg/cm2
110	Outside	Lower Wall	Wood	Beige	Intact	Negative	0	mg/cm2
111	Outside	Lower Wall	Wood	Dk-Brown	Intact	Negative	0.1	mg/cm2
112	Outside	Lower Wall	Wood	Dk-Brown	Intact	Negative	0.1	mg/cm2
113	Outside	Lower Wall	Concrete	Beige	Intact	Negative	0.1	mg/cm2
114	Outside	Lower Wall	Concrete	Beige	Intact	Negative	0.1	mg/cm2
115	Outside	Vent	Metal	Beige	Intact	Negative	0.3	mg/cm2
116	Outside	Vent	Metal	Beige	Intact	Negative	0.1	mg/cm2
117	Outside	Downspout	Metal	Dk-Brown	Intact	Negative	0.2	mg/cm2
118	Outside	Downspout	Metal	Dk-Brown	Intact	Negative	0.1	mg/cm2
119	Outside	Window Sill	Wood	Dk-Brown	Deteriorated	Negative	0.1	mg/cm2
120	Outside	Window Sill	Wood	Dk-Brown	Deteriorated	Negative	0.1	mg/cm2
121	Outside	Door	Wood	Dk-Brown	Deteriorated	Negative	0	mg/cm2
122	Outside	Door	Wood	Dk-Brown	Deteriorated	Negative	0.1	mg/cm2
123	Outside	HVAC	Metal	Lt-Brown	Intact	Negative	0	mg/cm2

This data is a screening of lead levels and provides results that are generally representative of typical conditions, but are not inclusive of all painted/coated surfaces at the Project Site.



READING NO.	ROOM	COMPONENT	SUBSTRATE	COLOR	CONDITION	RESULTS	PbC	UNITS
124	Outside	HVAC	Metal	Lt-Brown	Intact	Negative	0	mg/cm2
125	Outside	Vent	Metal	Dk-Brown	Intact	Negative	0.1	mg/cm2
126	Outside	Vent	Metal	Dk-Brown	Intact	Negative	0.1	mg/cm2
127	Inside	Lower Wall	Drywall	Off White	Intact	Negative	0.8	mg/cm2
128	Inside	Lower Wall	Drywall	Off White	Intact	Negative	0.3	mg/cm2
129	Inside	Door	Wood	Off White	Intact	Negative	0	mg/cm2
130	Inside	Door	Wood	Off White	Intact	Negative	0	mg/cm2
131	Inside	Lower Wall	Ceramic	Off White	Intact	Negative	0.2	mg/cm2
132	Inside	Lower Wall	Ceramic	Off White	Intact	Negative	0.3	mg/cm2
133	Inside	Floor	Ceramic	Off White	Intact	Negative	0	mg/cm2
134	Inside	Floor	Ceramic	Off White	Intact	Negative	0	mg/cm2
135	Inside	Lower Wall	Drywall	Off White	Intact	Negative	0.2	mg/cm2
136	Inside	Baseboard	Vinyl	Gray	Intact	Negative	0.2	mg/cm2
137	Inside	Baseboard	Vinyl	Gray	Intact	Negative	0	mg/cm2
138	Inside	Baseboard	Vinyl	Dk-Gray	Intact	Negative	0.2	mg/cm2
139	Inside	Baseboard	Vinyl	Dk-Gray	Intact	Negative	0.1	mg/cm2
140	Inside	Door	Wood	Varnish	Intact	Negative	0	mg/cm2
141	Inside	Door	Wood	Varnish	Intact	Negative	0	mg/cm2
142	Inside	Door Casing	Metal	Off White	Intact	Negative	0	mg/cm2
143	Inside	Door Casing	Metal	Off White	Intact	Negative	0.1	mg/cm2
144	Inside	Baseboard	Metal	Beige	Intact	Negative	0.3	mg/cm2
145	Inside	Baseboard	Metal	Beige	Intact	Negative	0.3	mg/cm2
146	Inside	Post	Wood	Varnish	Intact	Negative	0.2	mg/cm2
147	Inside	Post	Wood	Varnish	Intact	Negative	0	mg/cm2
148	Inside	Window Sill	Wood	Lt-Brown	Intact	Negative	0.1	mg/cm2
149	Inside	Window Sill	Wood	Lt-Brown	Intact	Negative	0.1	mg/cm2
150	Inside	Lower Wall	Drywall	Gray	Intact	Negative	0.1	mg/cm2
151	Inside	Lower Wall	Drywall	Gray	Intact	Negative	0.1	mg/cm2

This data is a screening of lead levels and provides results that are generally representative of typical conditions, but are not inclusive of all painted/coated surfaces at the Project Site.

READING NO.	ROOM	COMPONENT	SUBSTRATE	COLOR	CONDITION	RESULTS	PbC	UNITS
152	Inside	Counter	Wood	Varnish	Intact	Negative	0.1	mg/cm2
153	Inside	Counter	Wood	Varnish	Intact	Negative	0.1	mg/cm2
154	Inside	Lower Wall	Drywall	Off White	Intact	Negative	0.1	mg/cm2
155	Inside	Lower Wall	Drywall	Off White	Intact	Negative	0.1	mg/cm2
156	Inside	Beam	Wood	Brown	Intact	Negative	0.2	mg/cm2
157	Inside	Beam	Wood	Brown	Intact	Negative	0.3	mg/cm2
158	Inside	Beam	Wood	Varnish	Intact	Negative	0.2	mg/cm2
159	Inside	Beam	Wood	Varnish	Intact	Negative	0.1	mg/cm2
160	Inside	Baseboard	Vinyl	Dk-Brown	Intact	Negative	0	mg/cm2
161	Inside	Baseboard	Vinyl	Dk-Brown	Intact	Negative	0.2	mg/cm2
162	Inside	Lower Wall	Wood	Varnish	Intact	Negative	0.1	mg/cm2
163	Inside	Lower Wall	Wood	Varnish	Intact	Negative	0	mg/cm2
164	Inside	Door	Wood	Lt-Gray	Intact	Negative	0	mg/cm2
165	Inside	Door	Wood	Lt-Gray	Intact	Negative	0.1	mg/cm2
166	Inside	Lower Wall	Drywall	Lt-Green	Intact	Negative	0.1	mg/cm2
167	Inside	Lower Wall	Drywall	Lt-Green	Intact	Negative	0	mg/cm2
168	Inside	Window Frame	Wood	Lt-Blue	Intact	Negative	0.2	mg/cm2
169	Inside	Window Frame	Wood	Lt-Blue	Intact	Negative	0.1	mg/cm2
170	Inside	Railing	Wood	Lt-Gray	Intact	Negative	0.1	mg/cm2
171	Inside	Railing	Wood	Lt-Gray	Intact	Negative	0	mg/cm2
172	Inside	Ceiling	Tile	White	Intact	Negative	0.1	mg/cm2
173	Inside	Ceiling	Tile	White	Intact	Negative	0	mg/cm2
174	Inside	Ceiling	Tile	White	Intact	Negative	0.1	mg/cm2
175	Inside	Ceiling	Tile	White	Intact	Negative	0.1	mg/cm2
176	Roof	Pipe	Tile	Silver	Intact	Positive	64	mg/cm2
177	Roof	Roofing	Other	Silver	Intact	Negative	0	mg/cm2
178	Roof	Roofing	Other	Silver	Intact	Negative	0.2	mg/cm2
328		Calibrate				Negative	0.9	mg/cm2

This data is a screening of lead levels and provides results that are generally representative of typical conditions, but are not inclusive of all painted/coated surfaces at the Project Site.

READING NO.	ROOM	COMPONENT	SUBSTRATE	COLOR	CONDITION	RESULTS	PbC	UNITS
329		Calibrate				Negative	0.9	mg/cm2
330		Calibrate				Positive	1	mg/cm2

The above list are ALL the materials sampled and tested for lead by XRF. The positive materials are in red. samples non-detect for lead materials are in black. If you cannot positively identify the material you need to impact through the above inventory and the map showing the sample locations, do not disturb and contact EH&S for further sampling or guidance. The materials not listed were not sampled and must be assumed asbestos containing until proven not by testing.

This data is a screening of lead levels and provides results that are generally representative of typical conditions, but are not inclusive of all painted/coated surfaces at the Project Site.