

**CALIFORNIA STATE UNIVERSITY MARITIME ACADEMY
LOWER RESIDENCE A
HAZARDOUS MATERIALS SURVEY SUMMARY**



Sampled for **asbestos** and **detected**
Sampled for **lead** and **detected**

This is a quick reference summary of a survey completed by Vista Environmental in January 2023. The complete report is available by contacting EH&S at safety@csu.edu. If unsure about ANY information contact EH&S prior to impacting suspect material.

**CALIFORNIA STATE UNIVERSITY MARITIME ACADEMY
LOWER RESIDENCE A
HAZARDOUS MATERIALS SUMMARY**

Positive Asbestos Location

| HOMO. ID | MATERIAL | DESCRIPTION | LOCATION | CAL/OSHA CLASS | BAAQMD CATEGORY | ESTIMATED QUANTITY |
|-----------------|---------------------------|------------------------|---|-----------------------|---------------------------|---------------------------|
| H | Thermal System Insulation | White, Tank Insulation | Boiler Room. Asbestos is in the Silver Paint Layer. | Class II | Category II - Non-Friable | 110 SF (1 Tank) |
| J | Jacketing | Gray, Pipe | Boiler Room. This Material may Be inside wall and ceiling voids. Asbestos is in the Silver Paint Layer. | Class II | Category II - Non-Friable | 30 LF |
| O | Gasket | Black, White, Pipe | Boiler Room | Class II | Category I - Non-Friable | 5 SF (5 EA) |
| P | Vinyl Floor Tile/Mastic | 12" White/Black | Throughout Dorm rooms except A321, Throughout Hallways except A2 1 st floor, and Telecom Room. Debris was found on the exterior 1 st Floor North. | Class II | Category I - Non-Friable | 12,100 SF |
| X | Mastic | Yellow & Black Floor | A2: 1 st Floor Hallway | Class II | Category I - Non-Friable | 180 SF |

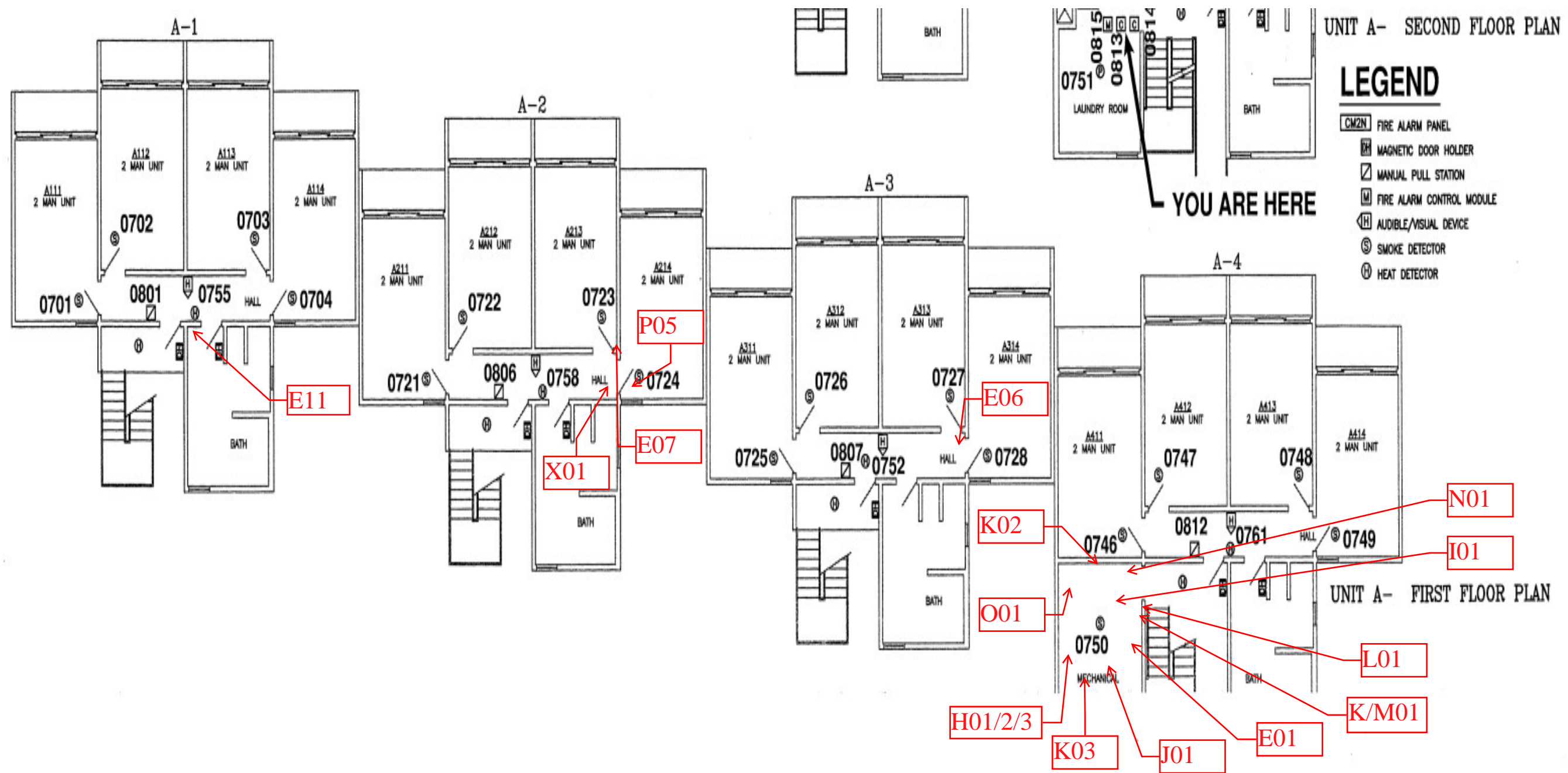
**CALIFORNIA STATE UNIVERSITY MARITIME ACADEMY
LOWER RESIDENCE A
ASBESTOS SAMPLING INVENTORY**

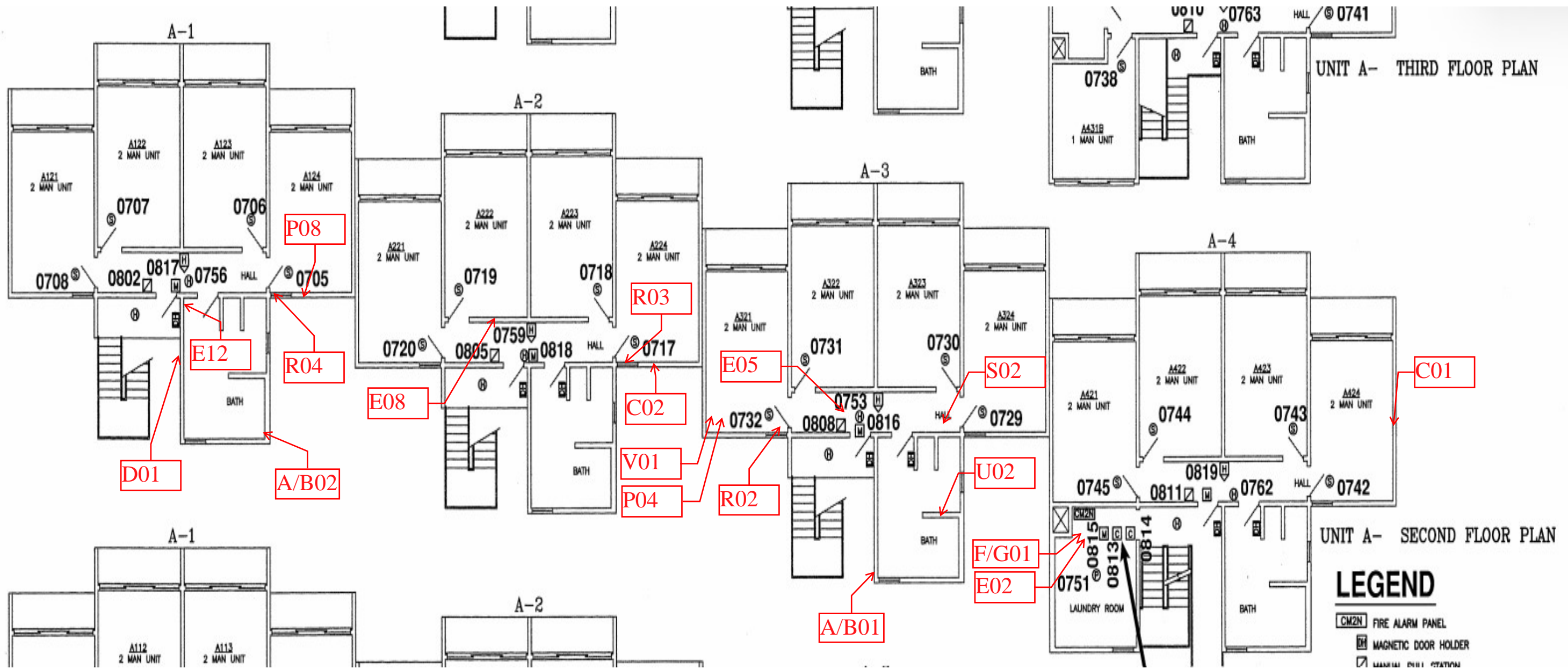
| HOMOGENEOUS ID | MATERIAL | DESCRIPTION | # OF SAMPLES |
|-----------------------|---------------------------|------------------------|---------------------|
| A | Paint | Beige, Exterior Walls | 2 |
| B | Paint | Brown, Exterior Trim | 2 |
| C | Sealant | White, Exterior Trim | 2 |
| D | Vapor Barrier | Black, Exterior Walls | 2 |
| E | Wallboard/Joint Compound | White/White | 12 |
| F | Vinyl Sheet Flooring | Blue, Pebbled | 1 |
| G | Basecove/Mastic | 6" Black/Tan | 1 |
| H | Thermal System Insulation | White, Tank Insulation | 3 |
| I | Jacketing | White, Pipe | 2 |
| J | Jacketing | Gray, Pipe | 1 |
| K | Texture Coat | White, Small | 3 |
| L | Firestop | Red | 1 |
| M | Firestop | Gray | 1 |
| N | Gasket | Black | 1 |
| O | Gasket | Black, White, Pipe | 1 |
| P | Vinyl Floor Tile/Mastic | 12" White/Black | 8 |
| Q | Basecove/Mastic | 2" Brown/Tan | 1 |
| R | Basecove/Mastic | 4" Gray/Tan | 4 |
| S | Mastic | Green, Carpet | 2 |
| T | Mastic | Yellow, Ceramic Tile | 2 |
| U | Mastic | Yellow, FRP | 2 |

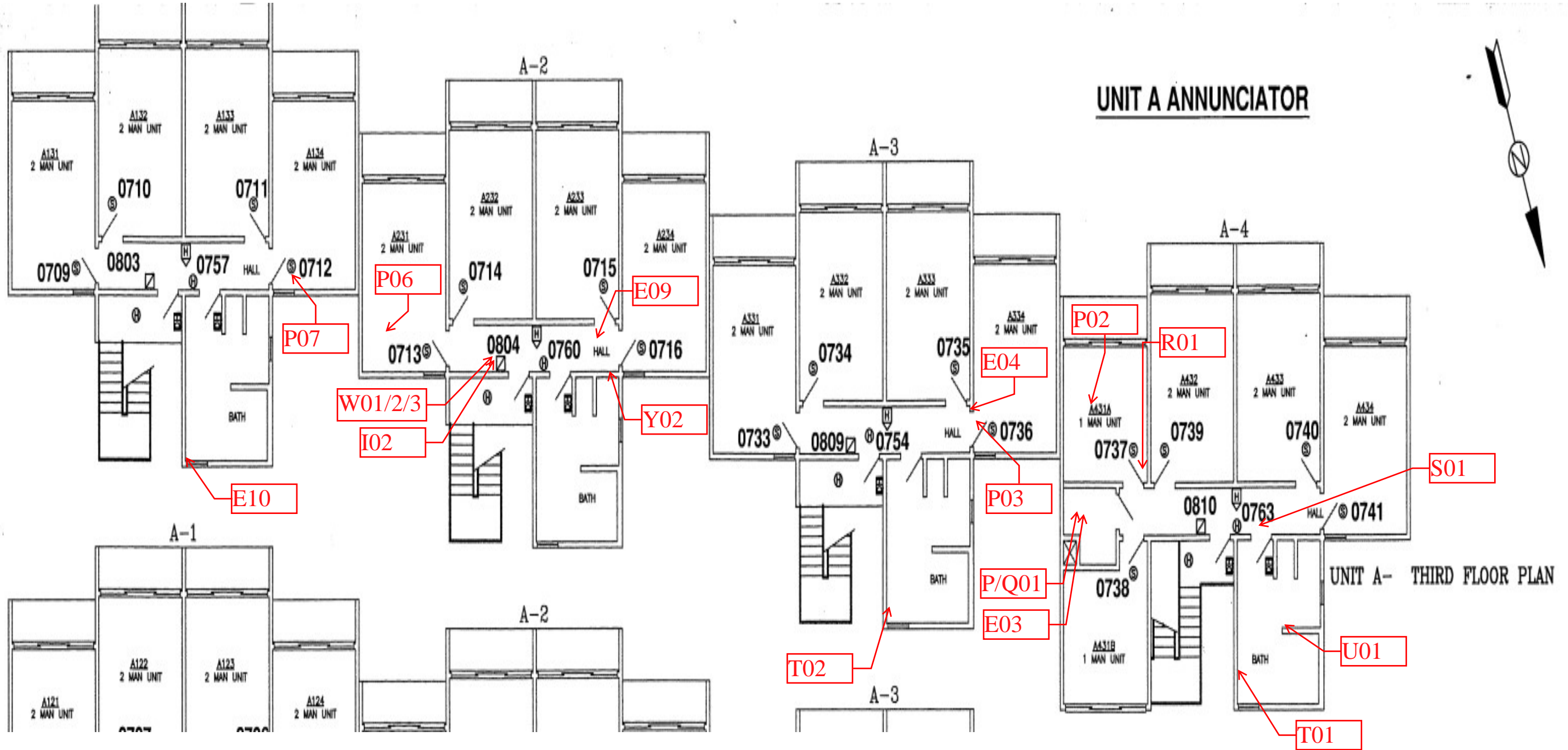
**CALIFORNIA STATE UNIVERSITY MARITIME ACADEMY
LOWER RESIDENCE A
ASBESTOS SAMPLING INVENTORY**

| HOMOGENEOUS ID | MATERIAL | DESCRIPTION | # OF SAMPLES |
|-----------------------|-----------------|----------------------|---------------------|
| V | Mastic | Brown, Carpet | 2 |
| W | Insulation | Gray, Blown-In | 3 |
| X | Mastic | Yellow & Black Floor | 1 |
| Y | Concrete | Gray, Floor | 2 |
| Z | Roof | Black & Brown | 1 |

Asbestos samples in red are positive. Other materials in black are negative. If the material that you may impact is not clearly sampled in the above table than reach out to EH&S at safety@csum.edu. before impacting any material.







UNIT A ANNUNCIATOR

UNIT A- THIRD FLOOR PLAN

Positive Lead Locations

| ROOM | COMPONENT | SUBSTRATE | COLOR | CONDITION | PB | UNITS |
|------------------|-------------|------------------|--------------|---------------|------------|--------------------------|
| Laundry | Door | Wood | Beige | Intact | 0.01 | mg/cm ² |
| Boiler Rm | Door Frame | Metal | Brown | Intact | 0.02 | mg/cm ² |
| Boiler Rm | Boiler | Metal | Blue | Intact | 0.01 | mg/cm ² |
| 3rd Floor | Window Sill | Wood | White | Deteriorated | 0.01 | mg/cm ² |
| 3rd Floor | Counter | Wood | White | Deteriorated | 0.02 | mg/cm ² |
| 3rd Floor | Trim | Ceramic | Gray | Deteriorated | 0.6 | mg/cm ² |
| 2nd Floor | Window Sill | Wood | White | Intact | 0.01 | mg/cm ² |
| 3rd Floor | Trim | Ceramic | Gray | Intact | 0.6 | mg/cm ² |
| 2nd Floor | Sink | Porcelain | White | Intact | 6.4 | mg/cm² |
| 1st Floor | Window Sill | Wood | White | Intact | 0.01 | mg/cm ² |
| 3rd Floor | Window Sill | Wood | White | Intact | 0.04 | mg/cm ² |
| 2nd Floor | Trim | Ceramic | Gray | Intact | 0.7 | mg/cm ² |
| 2nd Floor | Sink | Porcelain | White | Intact | 8.7 | mg/cm² |
| 1st Floor | Window Sill | Wood | White | Intact | 0.01 | mg/cm ² |
| Outside | Wall | Wood | Tan | Intact | 0.01 | mg/cm ² |
| Outside | Column | Metal | Brown | Intact | 0.4 | mg/cm ² |
| Outside | Case | Metal | Red | Intact | 0.06 | mg/cm ² |
| Outside | Wall | Wood | Beige | Intact | 0.01 | mg/cm ² |
| Outside | Case | Metal | Red | Intact | 0.04 | mg/cm ² |
| Outside | Column | Metal | Brown | Intact | 0.4 | mg/cm ² |

Bold = Lead Based

XFR Lead Sample Locations

| READING NO. | BUILDING | ROOM | COMPONENT | SUBSTRATE | COLOR | CONDITION | RESULTS | PbC | UNITS |
|-------------|-------------|-----------|-------------|-----------|-------|--------------|----------|------|--------------------|
| 609 | | | SHUTTER_CAL | | | | | 0.64 | cps |
| 610 | | | CALIBRATE | | | | Positive | 1 | mg/cm ² |
| 611 | | | CALIBRATE | | | | Positive | 1 | mg/cm ² |
| 613 | LOWER RES_A | LAUNDRY | DOOR FRAME | METAL | BEIGE | INTACT | Negative | 0 | mg/cm ² |
| 614 | LOWER RES_A | LAUNDRY | DOOR | WOOD | BEIGE | INTACT | Negative | 0.01 | mg/cm ² |
| 615 | LOWER RES_A | LAUNDRY | WALL | PLASTER | BEIGE | INTACT | Negative | 0 | mg/cm ² |
| 618 | LOWER RES_A | LAUNDRY | CEILING | PLASTER | WHITE | INTACT | Negative | 0 | mg/cm ² |
| 619 | LOWER RES_A | LAUNDRY | WINDOW SILL | WOOD | WHITE | INTACT | Negative | 0 | mg/cm ² |
| 620 | LOWER RES_A | BOILER RM | WALL | PLASTER | BEIGE | INTACT | Negative | 0 | mg/cm ² |
| 621 | LOWER RES_A | BOILER RM | DOOR FRAME | METAL | BROWN | INTACT | Negative | 0.02 | mg/cm ² |
| 623 | LOWER RES_A | BOILER RM | DOOR | METAL | GRAY | INTACT | Negative | 0 | mg/cm ² |
| 624 | LOWER RES_A | BOILER RM | PIPE | METAL | BLACK | INTACT | Negative | 0 | mg/cm ² |
| 626 | LOWER RES_A | BOILER RM | TANK | METAL | RED | INTACT | Negative | 0 | mg/cm ² |
| 627 | LOWER RES_A | BOILER RM | TANK | METAL | BLACK | INTACT | Negative | 0 | mg/cm ² |
| 628 | LOWER RES_A | BOILER RM | BOILER | METAL | BEIGE | INTACT | Negative | 0 | mg/cm ² |
| 629 | LOWER RES_A | BOILER RM | BOILER | METAL | BLUE | INTACT | Negative | 0.01 | mg/cm ² |
| 631 | LOWER RES_A | BOILER RM | CEILING | DRYWALL | BEIGE | INTACT | Negative | 0 | mg/cm ² |
| 658 | LOWER RES_A | 3rd floor | WALL | DRYWALL | WHITE | DETERIORATED | Negative | 0 | mg/cm ² |
| 659 | LOWER RES_A | 3rd floor | DOOR FRAME | METAL | WHITE | DETERIORATED | Negative | 0 | mg/cm ² |
| 660 | LOWER RES_A | 3rd floor | DOOR | METAL | WHITE | DETERIORATED | Negative | 0 | mg/cm ² |
| 661 | LOWER RES_A | 3rd floor | WINDOW SILL | WOOD | WHITE | DETERIORATED | Negative | 0.01 | mg/cm ² |
| 662 | LOWER RES_A | 3rd floor | WALL | DRYWALL | WHITE | DETERIORATED | Negative | 0 | mg/cm ² |
| 664 | LOWER RES_A | 3rd floor | CEILING | DRYWALL | WHITE | DETERIORATED | Negative | 0 | mg/cm ² |
| 665 | LOWER RES_A | 3rd floor | COUNTER | WOOD | WHITE | DETERIORATED | Negative | 0.02 | mg/cm ² |
| 666 | LOWER RES_A | 3rd floor | DOOR FRAME | WOOD | WHITE | DETERIORATED | Negative | 0 | mg/cm ² |

This data is a screening of lead levels and provides results that are generally representative of typical conditions, but are not inclusive of all painted/coated surfaces at the Project Site.

XFR Lead Sample Locations

| READING NO. | BUILDING | ROOM | COMPONENT | SUBSTRATE | COLOR | CONDITION | RESULTS | PbC | UNITS |
|-------------|-------------|-----------|-------------|-----------|-------|--------------|----------|------|--------------------|
| 667 | LOWER RES_A | 3rd floor | WALL | CERAMIC | WHITE | DETERIORATED | Negative | 0 | mg/cm ² |
| 668 | LOWER RES_A | 3rd floor | WALL PANEL | PLASTIC | WHITE | DETERIORATED | Negative | 0 | mg/cm ² |
| 669 | LOWER RES_A | 3rd floor | FLOOR | CERAMIC | BROWN | DETERIORATED | Negative | 0 | mg/cm ² |
| 670 | LOWER RES_A | 3rd floor | FLOOR | CERAMIC | BROWN | DETERIORATED | Negative | 0 | mg/cm ² |
| 671 | LOWER RES_A | 3rd floor | TRIM | CERAMIC | GRAY | DETERIORATED | Negative | 0.6 | mg/cm ² |
| 672 | LOWER RES_A | 2nd floor | VENT | DRYWALL | BEIGE | DETERIORATED | Negative | 0 | mg/cm ² |
| 674 | LOWER RES_A | 2nd floor | DOOR FRAME | TERRAZZO | BEIGE | DETERIORATED | Negative | 0 | mg/cm ² |
| 675 | LOWER RES_A | 2nd floor | DOOR | TERRAZZO | BEIGE | DETERIORATED | Negative | 0 | mg/cm ² |
| 676 | LOWER RES_A | 2nd floor | WINDOW SILL | WOOD | WHITE | INTACT | Negative | 0.01 | mg/cm ² |
| 677 | LOWER RES_A | 1st floor | WALL | DRYWALL | WHITE | INTACT | Negative | 0 | mg/cm ² |
| 678 | LOWER RES_A | 1st floor | DOOR FRAME | WOOD | WHITE | INTACT | Negative | 0 | mg/cm ² |
| 679 | LOWER RES_A | 1st floor | DOOR | WOOD | WHITE | INTACT | Negative | 0 | mg/cm ² |
| 680 | LOWER RES_A | 1st floor | WINDOW SILL | WOOD | WHITE | INTACT | Negative | 0 | mg/cm ² |
| 681 | LOWER RES_A | 1st floor | CABINET | METAL | RED | INTACT | Negative | 0 | mg/cm ² |
| 682 | LOWER RES_A | 3rd floor | DOOR | WOOD | WHITE | INTACT | Negative | 0 | mg/cm ² |
| 683 | LOWER RES_A | 3rd floor | DOOR FRAME | METAL | WHITE | INTACT | Negative | 0 | mg/cm ² |
| 684 | LOWER RES_A | 3rd floor | WALL | METAL | WHITE | INTACT | Negative | 0 | mg/cm ² |
| 685 | LOWER RES_A | 3rd floor | FLOOR | CERAMIC | TAN | INTACT | Negative | 0 | mg/cm ² |
| 686 | LOWER RES_A | 3rd floor | TRIM | CERAMIC | GRAY | INTACT | Negative | 0.6 | mg/cm ² |
| 687 | LOWER RES_A | 3rd floor | WINDOW SILL | WOOD | WHITE | INTACT | Negative | 0 | mg/cm ² |
| 688 | LOWER RES_A | 2nd floor | DOOR FRAME | PLASTIC | WHITE | INTACT | Negative | 0 | mg/cm ² |
| 689 | LOWER RES_A | 2nd floor | DOOR | WOOD | WHITE | INTACT | Negative | 0 | mg/cm ² |
| 690 | LOWER RES_A | 2nd floor | WALL | CONCRETE | WHITE | INTACT | Negative | 0 | mg/cm ² |
| 691 | LOWER RES_A | 2nd floor | WINDOW SILL | WOOD | WHITE | INTACT | Negative | 0 | mg/cm ² |
| 692 | LOWER RES_A | 2nd floor | SINK | PORCELAIN | WHITE | INTACT | Positive | 6.4 | mg/cm ² |

This data is a screening of lead levels and provides results that are generally representative of typical conditions, but are not inclusive of all painted/coated surfaces at the Project Site.

XFR Lead Sample Locations

| READING NO. | BUILDING | ROOM | COMPONENT | SUBSTRATE | COLOR | CONDITION | RESULTS | PbC | UNITS |
|-------------|-------------|-----------|-------------|-----------|-------|-----------|----------|------|--------------------|
| 693 | LOWER RES_A | 1st floor | CABINET | DRYWALL | RED | INTACT | Negative | 0 | mg/cm ² |
| 694 | LOWER RES_A | 1st floor | WALL PANEL | PLASTIC | BEIGE | INTACT | Negative | 0 | mg/cm ² |
| 697 | LOWER RES_A | 1st floor | WINDOW SILL | WOOD | WHITE | INTACT | Negative | 0.01 | mg/cm ² |
| 698 | LOWER RES_A | 3rd floor | WALL | DRYWALL | WHITE | INTACT | Negative | 0 | mg/cm ² |
| 699 | LOWER RES_A | 3rd floor | DOOR FRAME | METAL | WHITE | INTACT | Negative | 0 | mg/cm ² |
| 700 | LOWER RES_A | 3rd floor | DOOR | WOOD | WHITE | INTACT | Negative | 0 | mg/cm ² |
| 701 | LOWER RES_A | 3rd floor | CEILING | METAL | RED | INTACT | Negative | 0 | mg/cm ² |
| 702 | LOWER RES_A | 3rd floor | WINDOW SILL | WOOD | WHITE | INTACT | Negative | 0.04 | mg/cm ² |
| 703 | LOWER RES_A | 2nd floor | TRIM | CERAMIC | GRAY | INTACT | Negative | 0.7 | mg/cm ² |
| 704 | LOWER RES_A | 2nd floor | FLOOR | CERAMIC | BROWN | INTACT | Negative | 0 | mg/cm ² |
| 705 | LOWER RES_A | 2nd floor | WALL | CERAMIC | BEIGE | INTACT | Negative | 0 | mg/cm ² |
| 706 | LOWER RES_A | 2nd floor | SINK | PORCELAIN | WHITE | INTACT | Positive | 8.7 | mg/cm ² |
| 707 | LOWER RES_A | 2nd floor | WALL PANEL | PLASTIC | WHITE | INTACT | Negative | 0 | mg/cm ² |
| 708 | LOWER RES_A | 2nd floor | WINDOW SILL | WOOD | WHITE | INTACT | Negative | 0 | mg/cm ² |
| 709 | LOWER RES_A | 2nd floor | CABINET | DRYWALL | WHITE | INTACT | Negative | 0 | mg/cm ² |
| 710 | LOWER RES_A | 3rd floor | WALL | DRYWALL | WHITE | INTACT | Negative | 0 | mg/cm ² |
| 711 | LOWER RES_A | 3rd floor | DOOR FRAME | METAL | WHITE | INTACT | Negative | 0 | mg/cm ² |
| 712 | LOWER RES_A | 3rd floor | DOOR | WOOD | WHITE | INTACT | Negative | 0 | mg/cm ² |
| 713 | LOWER RES_A | 3rd floor | WINDOW SILL | WOOD | WHITE | INTACT | Negative | 0 | mg/cm ² |
| 714 | LOWER RES_A | 3rd floor | VENT | CERAMIC | WHITE | INTACT | Negative | 0 | mg/cm ² |
| 715 | LOWER RES_A | 3rd floor | WALL PANEL | PLASTIC | WHITE | INTACT | Negative | 0 | mg/cm ² |
| 716 | LOWER RES_A | 3rd floor | FLOOR | CERAMIC | TAN | INTACT | Negative | 0 | mg/cm ² |
| 717 | LOWER RES_A | 2nd floor | CABINET | METAL | RED | INTACT | Negative | 0 | mg/cm ² |
| 718 | LOWER RES_A | 2nd floor | WINDOW SILL | WOOD | WHITE | INTACT | Negative | 0 | mg/cm ² |
| 719 | LOWER RES_A | 1st floor | WINDOW SILL | WOOD | WHITE | INTACT | Negative | 0.01 | mg/cm ² |

This data is a screening of lead levels and provides results that are generally representative of typical conditions, but are not inclusive of all painted/coated surfaces at the Project Site.

XFR Lead Sample Locations

| READING NO. | BUILDING | ROOM | COMPONENT | SUBSTRATE | COLOR | CONDITION | RESULTS | PbC | UNITS |
|-------------|-------------|-----------|-------------|-----------|-------|-----------|----------|-----|--------------------|
| 720 | LOWER RES_A | 1st floor | WINDOW SILL | WOOD | WHITE | INTACT | Negative | 0 | mg/cm ² |
| 721 | | | CALIBRATE | | | | Positive | 1 | mg/cm ² |
| 722 | | | CALIBRATE | | | | Positive | 1 | mg/cm ² |
| 723 | | | CALIBRATE | | | | Positive | 1.1 | mg/cm ² |

The above list are ALL the materials sampled and tested for lead by XRF. The positive materials are in red. samples non-detect for lead materials are in black. If you cannot positively identify the material you need to impact through the above inventory and the map showing the sample locations, do not disturb and contact EH&S for further sampling or guidance. The materials not listed were not sampled and must be assumed asbestos containing until proven not by testing.

XFR Lead Sample Locations

| READING | BUILDING | ROOM | COMPONENT | SUBSTRATE | COLOR | CONDITION | RESULTS | PbC | UNITS |
|---------|-------------|---------|-------------|-----------|-------|-----------|----------|------|--------------------|
| 1 | | | SHUTTER_CAL | | | | | 0.72 | cps |
| 2 | | | CALIBRATE | | | | Positive | 1 | mg/cm ² |
| 3 | | | CALIBRATE | | | | Positive | 1.1 | mg/cm ² |
| 4 | | | CALIBRATE | | | | Positive | 1.1 | mg/cm ² |
| 52 | LOWER RES A | OUTSIDE | WALL | WOOD | TAN | INTACT | Negative | 0.01 | mg/cm ² |
| 53 | LOWER RES A | OUTSIDE | DOOR FRAME | WOOD | BROWN | INTACT | Negative | 0 | mg/cm ² |
| 54 | LOWER RES A | OUTSIDE | DOOR | METAL | BROWN | INTACT | Negative | 0 | mg/cm ² |
| 55 | LOWER RES A | OUTSIDE | PIPE | METAL | BLACK | INTACT | Negative | 0 | mg/cm ² |
| 56 | LOWER RES A | OUTSIDE | COLUMN | WOOD | BEIGE | INTACT | Negative | 0 | mg/cm ² |
| 57 | LOWER RES A | OUTSIDE | COLUMN | METAL | BROWN | INTACT | Negative | 0.4 | mg/cm ² |
| 58 | LOWER RES A | OUTSIDE | CASE | METAL | RED | INTACT | Negative | 0.06 | mg/cm ² |
| 59 | LOWER RES A | OUTSIDE | WALL | WOOD | BEIGE | INTACT | Negative | 0.01 | mg/cm ² |
| 60 | LOWER RES A | OUTSIDE | DOOR FRAME | WOOD | BROWN | INTACT | Negative | 0 | mg/cm ² |
| 61 | LOWER RES A | OUTSIDE | CASE | METAL | RED | INTACT | Negative | 0.04 | mg/cm ² |
| 62 | LOWER RES A | OUTSIDE | PIPE | METAL | BEIGE | INTACT | Negative | 0 | mg/cm ² |
| 63 | LOWER RES A | OUTSIDE | COLUMN | WOOD | BEIGE | INTACT | Negative | 0 | mg/cm ² |
| 64 | LOWER RES A | OUTSIDE | COLUMN | METAL | BROWN | INTACT | Negative | 0.4 | mg/cm ² |
| 65 | LOWER RES A | OUTSIDE | WALL | WOOD | BROWN | INTACT | Negative | 0 | mg/cm ² |
| 105 | | | CALIBRATE | | | | Positive | 1 | mg/cm ² |
| 112 | | | CALIBRATE | | | | Positive | 1.1 | mg/cm ² |
| 113 | | | CALIBRATE | | | | Positive | 1 | mg/cm ² |
| 114 | | | CALIBRATE | | | | Positive | 1.2 | mg/cm ² |

The above list are ALL the materials sampled and tested by XRF for lead. The positive materials are in red. The samples non-detect for lead materials are in black. If you cannot positively identify the material you need to impact through the above inventory, do not disturb and contact EH&S for further sampling or guidance. The materials not listed were not sampled and must be assumed lead containing until proven not by testing

This data is a screening of lead levels and provides results that are generally representative of typical conditions, but are not inclusive of all painted/coated surfaces at the Project Site.