

CALIFORNIA STATE UNIVERSITY MARITIME ACADEMY  
LOWER RESIDENCE C



Sampled for **asbestos** and **detected**  
Sampled for **lead** and **detected**

This is a quick reference summary of a survey completed by Vista Environmental in January 2023. The complete report is available by contacting EH&S at [safety@csum.edu](mailto:safety@csum.edu). If unsure about ANY information contact EH&S prior to impacting suspect material

**CALIFORNIA STATE UNIVERSITY MARITIME ACADEMY  
LOWER RESIDENCE C  
HAZARDOUS MATERIALS SUMMARY**

***Positive Asbestos Locations***

<b>HOMO. ID</b>	<b>MATERIAL</b>	<b>DESCRIPTION</b>	<b>LOCATION</b>	<b>CAL/OSHA CLASS</b>	<b>BAAQMD CATEGORY</b>	<b>ESTIMATED QUANTITY</b>
F	Vinyl Sheet Flooring/ Mastic	Blue, Pebble/Black	Laundry Room. Asbestos is in Black Mastic Layer	Class II	Category I - Non-Friable	175 SF
N	Gasket	Black	Boiler Room	Class II	Category I - Non-Friable	5 SF (5 EA)
P	Vinyl Floor Tile/Mastic	12" White/Black	Throughout Rooms and Hallways except Q below and C2:3 <sup>rd</sup> Floor, Telecom Room. Debris was found on the exterior 1st Floor North.	Class II	Category I - Non-Friable	11,750 SF
Q	Basecove/Mastic	2" Brown/Tan & Brown	Telecom Room	Class II	Category I - Non-Friable	22 SF (64 LF)
S	Mastic	Black, Carpet	Rooms C121 and C321, C1: 2 <sup>nd</sup> Floor Hallway, C2, C3, C4: 3 <sup>rd</sup> Floor Hallway	Class II	Category I - Non-Friable	1,250 SF

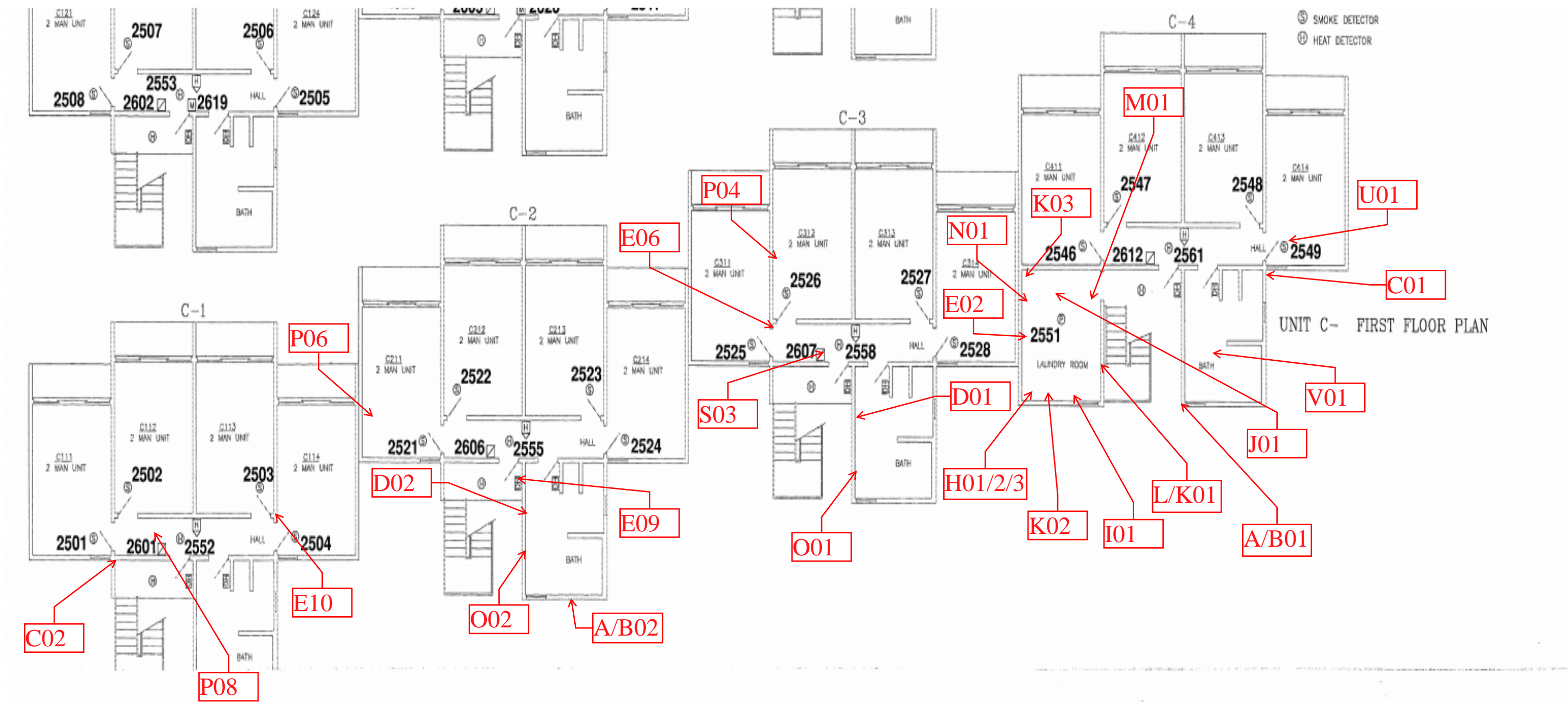
**CALIFORNIA STATE UNIVERSITY MARITIME ACADEMY  
LOWER RESIDENCE C  
ASBESTOS SAMPLING INVENTORY**

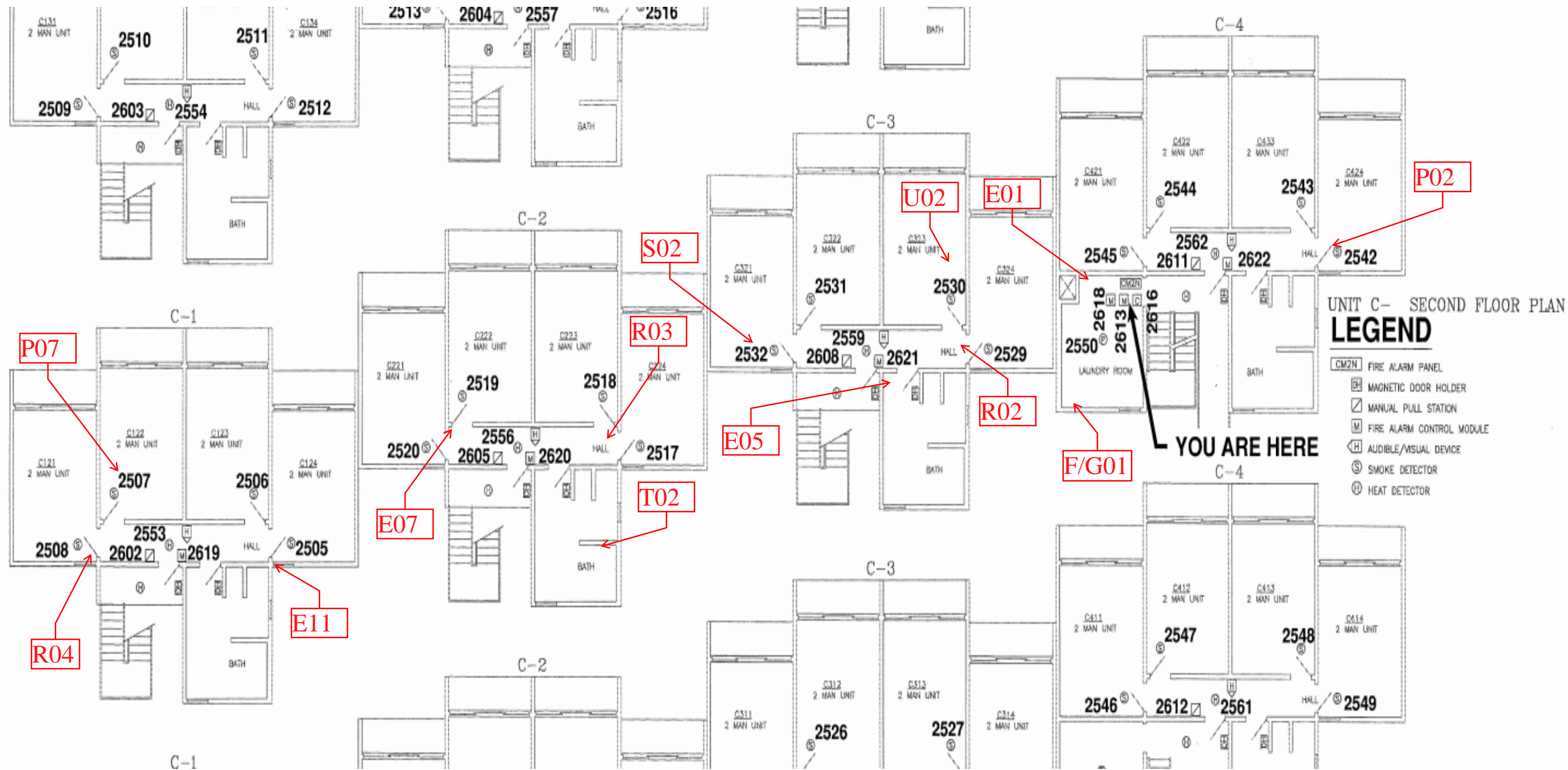
<b>HOMOGENEOUS ID</b>	<b>MATERIAL</b>	<b>DESCRIPTION</b>	<b># OF SAMPLES</b>
A	Paint	Beige, Exterior Walls	2
B	Paint	Brown, Exterior Trim	2
C	Sealant	White, Exterior Trim	2
D	Vapor Barrier	Black, Exterior Walls	2
E	Wallboard/Joint Compound	White/White	12
F	Vinyl Sheet Flooring	Blue Pebble	1
G	Basecove/Mastic	6" Black/Tan	1
H	Thermal System Insulation	White, Tank	3
I	Jackets	White, Pipe	2
J	Jackets	Gray, Pipe	1
K	Texture Coat	White, Small	3
L	Firestop	Red	1
M	Gasket	Black, Rubber	1
N	Gasket	Black	1
O	Concrete	Gray, Foundation	2
P	Vinyl Floor Tile/Mastic	12" White/Black	8
Q	Basecove/Mastic	2" Brown/Tan	1
R	Basecove/Mastic	4" Gray/Tan	4
S	Mastic	Black, Carpet	3
T	Mastic	Yellow, Ceramic Tile	2
U	Mastic	Tan, Carpet	2

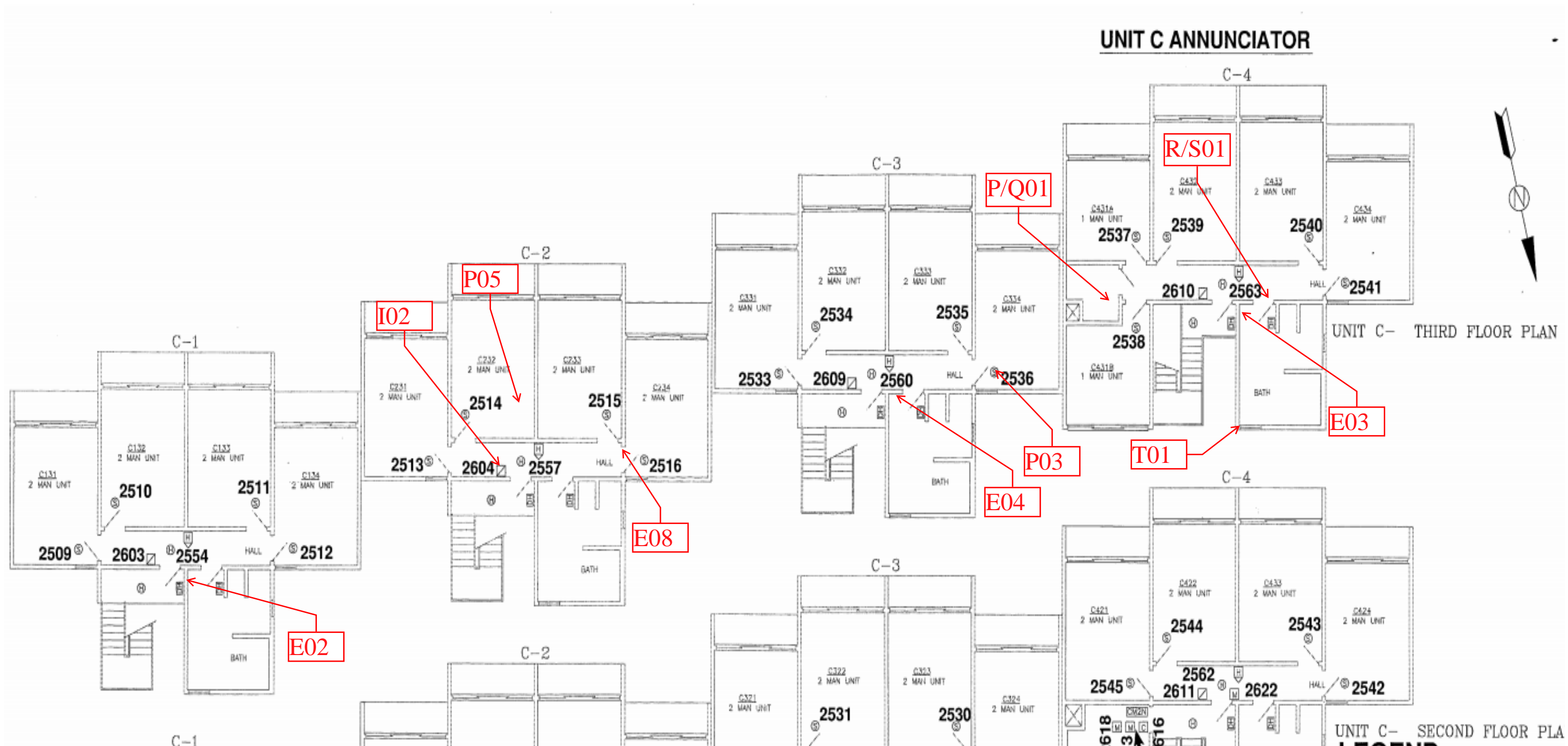
**CALIFORNIA STATE UNIVERSITY MARITIME ACADEMY  
LOWER RESIDENCE C  
ASBESTOS SAMPLING INVENTORY**

<b>HOMOGENEOUS ID</b>	<b>MATERIAL</b>	<b>DESCRIPTION</b>	<b># OF SAMPLES</b>
V	Mastic	Yellow, FRP	1
W	Roof	Black & Brown	1

Asbestos samples in red are positive. Other materials in black are negative. If the material that you may impact is not clearly sampled in the above table than reach out to EH&S at [safety@csum.edu](mailto:safety@csum.edu). before impacting any material.







CALIFORNIA STATE UNIVERSITY MARITIME ACADEMY  
 LOWER RESIDENCE C  
 HAZARDOUS MATERIALS SUMMARY

*Positive Lead*

ROOM	COMPONENT	SUBSTRATE	COLOR	CONDITION	PB	UNITS
Laundry Rm	Door	Wood	Beige	Intact	0.03	mg/cm <sup>2</sup>
Boiler Rm	Door Frame	Metal	Brown	Intact	0.05	mg/cm <sup>2</sup>
Boiler Rm	Boiler	Metal	Blue	Intact	0.01	mg/cm <sup>2</sup>
Inside	Door	Wood	Beige	Intact	0.02	mg/cm <sup>2</sup>
Inside	Ceiling	Drywall	Beige	Intact	0.07	mg/cm <sup>2</sup>
<b>Inside</b>	<b>Sink</b>	<b>Porcelain</b>	<b>White</b>	<b>Intact</b>	<b>5.9</b>	<b>mg/cm<sup>2</sup></b>
Outside	Column	Metal	Brown	Intact	0.25	mg/cm <sup>2</sup>
Outside	Case	Metal	Red	Intact	0.04	mg/cm <sup>2</sup>
Outside	Pipe	Metal	Beige	Intact	0.03	mg/cm <sup>2</sup>
Outside	Column	Metal	Brown	Intact	0.3	mg/cm <sup>2</sup>
Outside	Case	Metal	Red	Intact	0.04	mg/cm <sup>2</sup>

*Bold = Lead Based*



*XFR Lead Sample Locations*

READING NO.	BUILDING	ROOM	COMPONENT	SUBSTRATE	COLOR	CONDITION	RESULTS	PbC	UNITS
609			SHUTTER_CAL					0.64	cps
610			CALIBRATE				Positive	1	mg/cm <sup>2</sup>
611			CALIBRATE				Positive	1	mg/cm <sup>2</sup>
643	LOWER RES_C	LAUNDRY RM	WINDOW SILL	WOOD	WHITE	INTACT	Negative	0	mg/cm <sup>2</sup>
644	LOWER RES_C	LAUNDRY RM	WALL	DRYWALL	BEIGE	INTACT	Negative	0	mg/cm <sup>2</sup>
645	LOWER RES_C	LAUNDRY RM	DOOR	METAL	BEIGE	INTACT	Negative	0	mg/cm <sup>2</sup>
646	LOWER RES_C	LAUNDRY RM	DOOR	WOOD	BEIGE	INTACT	Negative	0.03	mg/cm <sup>2</sup>
647	LOWER RES_C	LAUNDRY RM	CABINET	DRYWALL	BEIGE	INTACT	Negative	0	mg/cm <sup>2</sup>
648	LOWER RES_C	BOILER RM	WALL	DRYWALL	BEIGE	INTACT	Negative	0	mg/cm <sup>2</sup>
649	LOWER RES_C	BOILER RM	DOOR	METAL	GRAY	INTACT	Negative	0	mg/cm <sup>2</sup>
650	LOWER RES_C	BOILER RM	DOOR FRAME	METAL	BROWN	INTACT	Negative	0.05	mg/cm <sup>2</sup>
652	LOWER RES_C	BOILER RM	PARKING STRIPE	METAL	BLACK	INTACT	Negative	0	mg/cm <sup>2</sup>
654	LOWER RES_C	BOILER RM	TANK	METAL	RED	INTACT	Negative	0	mg/cm <sup>2</sup>
655	LOWER RES_C	BOILER RM	BOILER	METAL	BLACK	INTACT	Negative	0	mg/cm <sup>2</sup>
656	LOWER RES_C	BOILER RM	BOILER	METAL	GREEN	INTACT	Negative	0	mg/cm <sup>2</sup>
657	LOWER RES_C	BOILER RM	BOILER	METAL	BLUE	INTACT	Negative	0.01	mg/cm <sup>2</sup>
721			CALIBRATE				Positive	1	mg/cm <sup>2</sup>
722			CALIBRATE				Positive	1	mg/cm <sup>2</sup>
723			CALIBRATE				Positive	1.1	mg/cm <sup>2</sup>
782			SHUTTER_CAL					0.71	mg/cm <sup>2</sup>
783			CALIBRATE				Positive	1	mg/cm <sup>2</sup>
785			CALIBRATE				Positive	1	mg/cm <sup>2</sup>
786			CALIBRATE				Positive	1	mg/cm <sup>2</sup>
853	LOWER RES_C	INSIDE	WALL	DRYWALL	BEIGE	INTACT	Negative	0	mg/cm <sup>2</sup>
854	LOWER RES_C	INSIDE	WALL PANEL	WOOD	BEIGE	INTACT	Negative	0	mg/cm <sup>2</sup>

This data is a screening of lead levels and provides results that are generally representative of typical conditions, but are not inclusive of all painted/coated surfaces at the Project Site.

***XFR Lead Sample Locations***

READING NO.	BUILDING	ROOM	COMPONENT	SUBSTRATE	COLOR	CONDITION	RESULTS	PbC	UNITS
855	LOWER RES_C	INSIDE	DOOR FRAME	METAL	BEIGE	INTACT	Negative	0	mg/cm <sup>2</sup>
856	LOWER RES_C	INSIDE	DOOR	WOOD	BEIGE	INTACT	Negative	0	mg/cm <sup>2</sup>
857	LOWER RES_C	INSIDE	WINDOW SILL	WOOD	WHITE	INTACT	Negative	0	mg/cm <sup>2</sup>
858	LOWER RES_C	INSIDE	WALL	CERAMIC	BEIGE	INTACT	Negative	0	mg/cm <sup>2</sup>
859	LOWER RES_C	INSIDE	CABINET	METAL	RED	INTACT	Negative	0	mg/cm <sup>2</sup>
860	LOWER RES_C	INSIDE	WINDOW SILL	WOOD	WHITE	INTACT	Negative	0	mg/cm <sup>2</sup>
861	LOWER RES_C	INSIDE	DOOR FRAME	METAL	BEIGE	INTACT	Negative	0	mg/cm <sup>2</sup>
862	LOWER RES_C	INSIDE	PIPE	METAL	BEIGE	INTACT	Negative	0	mg/cm <sup>2</sup>
863	LOWER RES_C	INSIDE	DOOR FRAME	METAL	BEIGE	INTACT	Negative	0	mg/cm <sup>2</sup>
864	LOWER RES_C	INSIDE	FLOOR	CONCRETE	BEIGE	INTACT	Negative	0	mg/cm <sup>2</sup>
865	LOWER RES_C	INSIDE	FLOOR	CONCRETE	BEIGE	INTACT	Negative	0	mg/cm <sup>2</sup>
866	LOWER RES_C	INSIDE	DOOR FRAME	METAL	BEIGE	INTACT	Negative	0	mg/cm <sup>2</sup>
867	LOWER RES_C	INSIDE	DOOR	WOOD	BEIGE	INTACT	Negative	0.02	mg/cm <sup>2</sup>
868	LOWER RES_C	INSIDE	WALL	DRYWALL	WHITE	INTACT	Negative	0	mg/cm <sup>2</sup>
869	LOWER RES_C	INSIDE	WALL	WOOD	WHITE	INTACT	Negative	0	mg/cm <sup>2</sup>
870	LOWER RES_C	INSIDE	WALL	CERAMIC	BEIGE	INTACT	Negative	0	mg/cm <sup>2</sup>
871	LOWER RES_C	INSIDE	CEILING	DRYWALL	BEIGE	INTACT	Negative	0	mg/cm <sup>2</sup>
872	LOWER RES_C	INSIDE	WINDOW SILL	WOOD	WHITE	INTACT	Negative	0	mg/cm <sup>2</sup>
873	LOWER RES_C	INSIDE	CABINET	METAL	RED	INTACT	Negative	0	mg/cm <sup>2</sup>
874	LOWER RES_C	INSIDE	DOOR FRAME	METAL	WHITE	INTACT	Negative	0	mg/cm <sup>2</sup>
875	LOWER RES_C	INSIDE	WINDOW SILL	WOOD	WHITE	INTACT	Negative	0	mg/cm <sup>2</sup>
876	LOWER RES_C	INSIDE	WALL PANEL	PLASTIC	WHITE	INTACT	Negative	0	mg/cm <sup>2</sup>
877	LOWER RES_C	INSIDE	CEILING	DRYWALL	BEIGE	INTACT	Negative	0.07	mg/cm <sup>2</sup>
878	LOWER RES_C	INSIDE	WALL PANEL	WOOD	BEIGE	INTACT	Negative	0	mg/cm <sup>2</sup>
879	LOWER RES_C	INSIDE	WINDOW SILL	WOOD	WHITE	INTACT	Negative	0	mg/cm <sup>2</sup>

This data is a screening of lead levels and provides results that are generally representative of typical conditions, but are not inclusive of all painted/coated surfaces at the Project Site.

*XFR Lead Sample Locations*

READING NO.	BUILDING	ROOM	COMPONENT	SUBSTRATE	COLOR	CONDITION	RESULTS	PbC	UNITS
880	LOWER RES_C	INSIDE	WALL	DRYWALL	WHITE	INTACT	Negative	0	mg/cm <sup>2</sup>
882	LOWER RES_C	INSIDE	DOOR FRAME	METAL	WHITE	INTACT	Negative	0	mg/cm <sup>2</sup>
883	LOWER RES_C	INSIDE	DOOR	WOOD	WHITE	INTACT	Negative	0	mg/cm <sup>2</sup>
884	LOWER RES_C	INSIDE	CABINET	METAL	RED	INTACT	Negative	0	mg/cm <sup>2</sup>
885	LOWER RES_C	INSIDE	WALL	CERAMIC	BEIGE	INTACT	Negative	0	mg/cm <sup>2</sup>
886	LOWER RES_C	INSIDE	FLOOR	CERAMIC	BEIGE	INTACT	Negative	0	mg/cm <sup>2</sup>
887	LOWER RES_C	INSIDE	FLOOR	CERAMIC	BROWN	INTACT	Negative	0	mg/cm <sup>2</sup>
888	LOWER RES_C	INSIDE	CEILING	DRYWALL	BEIGE	INTACT	Negative	0	mg/cm <sup>2</sup>
889	LOWER RES_C	INSIDE	WINDOW SILL	WOOD	WHITE	INTACT	Negative	0	mg/cm <sup>2</sup>
890	LOWER RES_C	INSIDE	CABINET	METAL	RED	INTACT	Negative	0	mg/cm <sup>2</sup>
891	LOWER RES_C	INSIDE	WALL	DRYWALL	WHITE	INTACT	Negative	0	mg/cm <sup>2</sup>
892	LOWER RES_C	INSIDE	WINDOW SILL	WOOD	WHITE	INTACT	Negative	0	mg/cm <sup>2</sup>
893	LOWER RES_C	INSIDE	DOOR FRAME	METAL	BEIGE	INTACT	Negative	0	mg/cm <sup>2</sup>
894	LOWER RES_C	INSIDE	DOOR	WOOD	BEIGE	INTACT	Negative	0	mg/cm <sup>2</sup>
895	LOWER RES_C	INSIDE	WALL	DRYWALL	BEIGE	INTACT	Negative	0	mg/cm <sup>2</sup>
896	LOWER RES_C	INSIDE	WALL	CERAMIC	BEIGE	INTACT	Negative	0	mg/cm <sup>2</sup>
897	LOWER RES_C	INSIDE	FLASHING	CERAMIC	BEIGE	INTACT	Negative	0	mg/cm <sup>2</sup>
898	LOWER RES_C	INSIDE	FLOOR	CERAMIC	BROWN	INTACT	Negative	0	mg/cm <sup>2</sup>
899	LOWER RES_C	INSIDE	CEILING	DRYWALL	WHITE	INTACT	Negative	0	mg/cm <sup>2</sup>
900	LOWER RES_C	INSIDE	WINDOW SILL	WOOD	WHITE	INTACT	Negative	0	mg/cm <sup>2</sup>
901	LOWER RES_C	INSIDE	CABINET	METAL	RED	INTACT	Negative	0	mg/cm <sup>2</sup>
902	LOWER RES_C	INSIDE	SINK	PORCELAIN	WHITE	INTACT	Positive	5.9	mg/cm <sup>2</sup>
903			CALIBRATE				Negative	0.8	mg/cm <sup>2</sup>
904			CALIBRATE				Negative	0.8	mg/cm <sup>2</sup>
905			CALIBRATE				Negative	0.8	mg/cm <sup>2</sup>

This data is a screening of lead levels and provides results that are generally representative of typical conditions, but are not inclusive of all painted/coated surfaces at the Project Site.

***XFR Lead Sample Locations***

READING NO.	BUILDING	ROOM	COMPONENT	SUBSTRATE	COLOR	CONDITION	RESULTS	PbC	UNITS
1			SHUTTER_CAL					0.72	cps
2			CALIBRATE				Positive	1	mg/cm <sup>2</sup>
3			CALIBRATE				Positive	1.1	mg/cm <sup>2</sup>
4			CALIBRATE				Positive	1.1	mg/cm <sup>2</sup>
84	LOWER RES C	OUTSIDE	WALL	WOOD	BEIGE	INTACT	Negative	0	mg/cm <sup>2</sup>
85	LOWER RES C	OUTSIDE	COLUMN	METAL	BROWN	INTACT	Negative	0.25	mg/cm <sup>2</sup>
86	LOWER RES C	OUTSIDE	DOOR FRAME	WOOD	BROWN	INTACT	Negative	0	mg/cm <sup>2</sup>
87	LOWER RES C	OUTSIDE	CASE	METAL	RED	INTACT	Negative	0.04	mg/cm <sup>2</sup>
88	LOWER RES C	OUTSIDE	PIPE	METAL	BEIGE	INTACT	Negative	0.03	mg/cm <sup>2</sup>
89	LOWER RES C	OUTSIDE	COLUMN	WOOD	BEIGE	INTACT	Negative	0	mg/cm <sup>2</sup>
90	LOWER RES C	OUTSIDE	WALL	WOOD	BROWN	INTACT	Negative	0	mg/cm <sup>2</sup>
91	LOWER RES C	OUTSIDE	WALL	WOOD	BEIGE	INTACT	Negative	0	mg/cm <sup>2</sup>
92	LOWER RES C	OUTSIDE	COLUMN	METAL	BROWN	INTACT	Negative	0.3	mg/cm <sup>2</sup>
93	LOWER RES C	OUTSIDE	DOOR FRAME	WOOD	BROWN	INTACT	Negative	0	mg/cm <sup>2</sup>
94	LOWER RES C	OUTSIDE	DOOR	METAL	BROWN	INTACT	Negative	0	mg/cm <sup>2</sup>
95	LOWER RES C	OUTSIDE	CASE	METAL	RED	INTACT	Negative	0.04	mg/cm <sup>2</sup>
96	LOWER RES C	OUTSIDE	PIPE	METAL	BEIGE	INTACT	Negative	0	mg/cm <sup>2</sup>
97	LOWER RES C	OUTSIDE	COLUMN	WOOD	BEIGE	INTACT	Negative	0	mg/cm <sup>2</sup>
98	LOWER RES C	OUTSIDE	WALL	WOOD	BROWN	INTACT	Negative	0	mg/cm <sup>2</sup>
105			CALIBRATE				Positive	1	mg/cm <sup>2</sup>
112			CALIBRATE				Positive	1.1	mg/cm <sup>2</sup>
113			CALIBRATE				Positive	1	mg/cm <sup>2</sup>
114			CALIBRATE				Positive	1.2	mg/cm <sup>2</sup>

***The above list are ALL the materials sampled and tested by XRF for lead. The positive materials are in red. The non-detect samples for lead materials are in black. If you cannot positively identify the material you need to impact through the above inventory, do not disturb and contact EH&S for further sampling or guidance. The materials not listed were not sampled and must be assumed lead containing until proven not by testing***



This data is a screening of lead levels and provides results that are generally representative of typical conditions, but are not inclusive of all painted/coated surfaces at the Project Site.