

CALIFORNIA STATE UNIVERSITY MARITIME ACADEMY
UPPER RESIDENCE HALL
HAZARDOUS MATERIALS SURVEY



Sampled for **asbestos** and **detected**
Sampled for **lead** and **detected**

This is a quick reference summary of a survey completed by Vista Environmental in January 2023. The complete report is available by contacting EH&S at safety@csum.edu. If unsure about ANY information contact EH&S prior to impacting suspect material.

**CALIFORNIA STATE UNIVERSITY MARITIME ACADEMY
UPPER RESIDENCE HALL
HAZARDOUS MATERIALS SURVEY**

Positive Asbestos Locations

HOMO. ID	MATERIAL	DESCRIPTION	LOCATION	CAL/OSHA CLASS	BAAQMD CATEGORY	ESTIMATED QUANTITY
M & S	Vinyl Sheet Flooring/Backing/Mastic	Beige, Tan & Gray, Pebble/Gray/Black	Throughout Student Rooms Except Room 110, Room 120. This material can be under Carpeting and Floor Tile. Asbestos is in backing and Black Mastic	Class II	Friable (RACM when Removed)	16,830 SF
O	Mirror Mastic	Assume	Restrooms	Class II	Category I - Non-Friable	460 SF
Y	Wallboard/Joint Compound	White/White, Textured	1 st Floor: Laundry Room Storage	Class II	Friable (RACM when Removed)	425 SF
EE	Mastic	Black, Carpet	1 st Floor: NW Offices, Game Room, Lounge and Student Staff Office	Class II	Category I - Non-Friable	2,250 SF
MM	Gasket	Black, Boiler	Boiler Room	Class II	Category I - Non-Friable	5 SF (5 EA)
ZZ	Vinyl Floor Tile/Mastic	12" Off White/Black	1 st Floor: NE Apartment Throughout except Kitchen and Restroom. Assumed under Laminate Flooring	Class II	Category I - Non-Friable	1,100 SF

**CALIFORNIA STATE UNIVERSITY MARITIME ACADEMY
UPPER RESIDENCE HALL
COMPLETE ASBESTOS SAMPLING INVENTORY**

HOMOGENEOUS ID	MATERIAL	DESCRIPTION	# OF SAMPLES
A	Spray Applied Acoustic Ceiling	White, Ceiling	8
B	Thermal System Insulation	White, Bottom	2
C	Jacketing	White Fiberglass Pipe	2
D	Paint/Brick/Mortar	White/Red/Gray	2
E	Paint/Concrete Masonry Unit/Mortar	White/Gray/Gray	3
F	Vinyl Floor Tile/Mastic	12" White/Black	6
G	Basecove/Mastic	6" Black/Tan & Brown	6
H	Acoustic Ceiling Tile/Mastic	12" Gouge/Brown	2
I	Paint/Plaster	White/Gray	7
J	Vinyl Floor Tile/Backing	Blue/Pebble/Gray	2
K	Mastic	Yellow, Ceramic	2
L	Concrete Masonry Unit/Grout	Beige/White	1
M	Mastic/Vinyl Sheet Flooring/Backing/Mastic	Green Carpet/Beige, Pebble/Gray/Black	6
N	Sealant	Brown/Doorframe	1
O	Mirror Mastic	Unknown, Restrooms	Assumed
P	Firestop	Red	2
Q	Firestop	Gray	2
R	Wall Panel Mastic	Tan	1
S	Vinyl Sheet Flooring/Backing/Mastic	Tan & Gray Pebble/Gray/Tan	6
T	Basecove/Mastic	4" Brown/Brown	2
U	Vinyl Sheet Flooring/Mastic	12" Pink/Tan	2

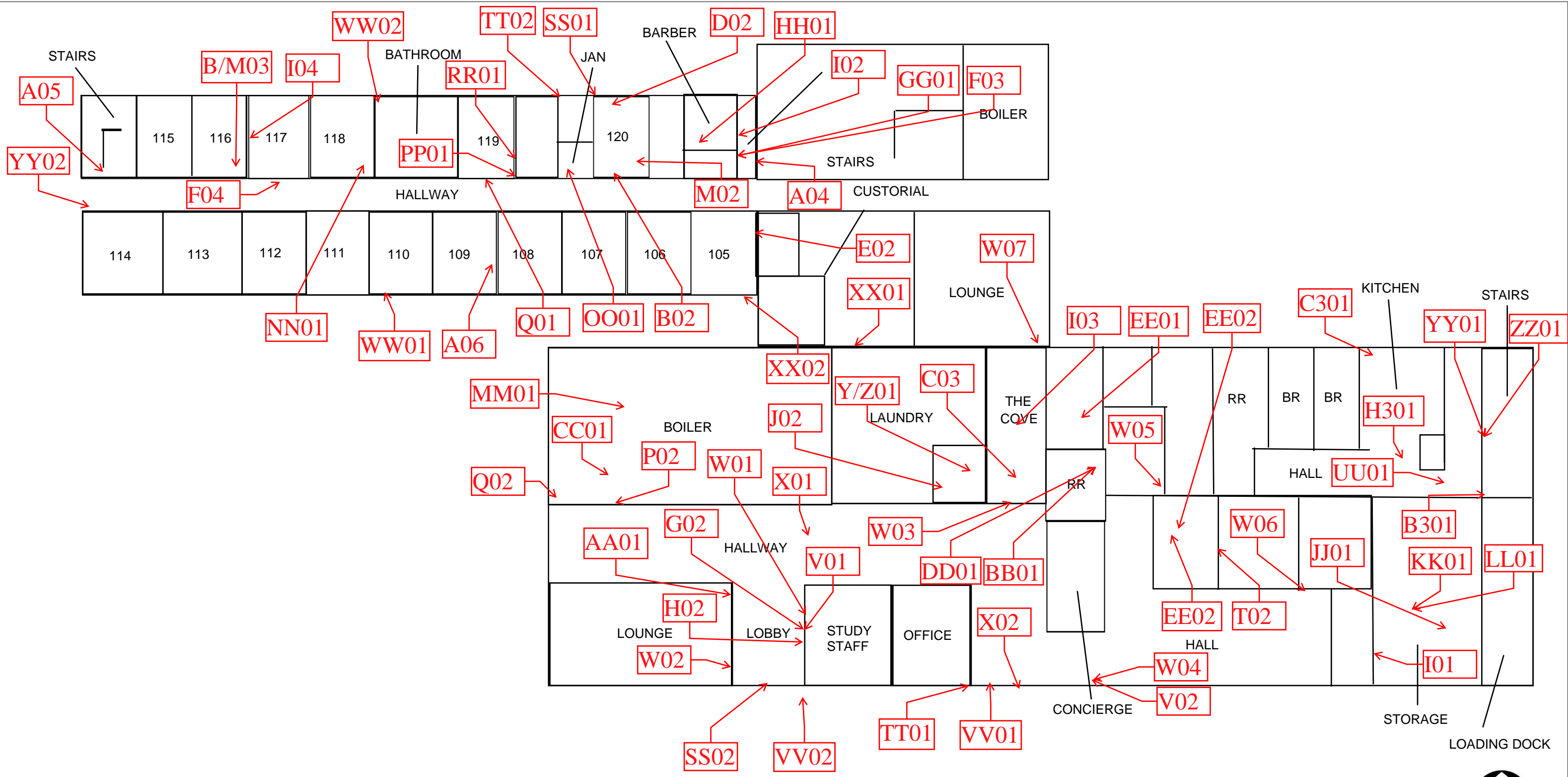
**CALIFORNIA STATE UNIVERSITY MARITIME ACADEMY
UPPER RESIDENCE HALL
COMPLETE ASBESTOS SAMPLING INVENTORY**

HOMOGENEOUS ID	MATERIAL	DESCRIPTION	# OF SAMPLES
V	Wallboard/Joint Compound	White/White, Text	2
W	Texture Coat	White, Small	7
X	Acoustic Ceiling Panel	2'X4' White Pinhole Gouge	2
Y	Wallboard/Joint Compound	White/White, Texture	1
Z	Texture Coat	White Medium	3
AA	Sealant	White, Column	1
BB	Acoustic Ceiling Panel	2'X4' White, Solid	1
CC	Jacketing	Green, Dom Pipe	1
DD	Grout/Mortar	White/White Ceramic Tile	1
EE	Mastic	Black, Carpet	2
FF	Mastic	Gray Carpet	2
GG	Vinyl Sheet Flooring/Backing	Dark Gray/Gray	1
HH	Acoustic Ceiling Panel	2'X4' White Fissured	1
II	Concrete	Gray, Wall	1
JJ	Vinyl Floor Tile/Mastic	12" White Spotted/Black	1
KK	Vinyl Floor Tile/Mastic	12" Gray Spotted/Black	1
LL	Vinyl Floor Tile/Mastic	12" Blue Spotted/Black	1
MM	Gasket	Black, Boiler	1
NN	Vinyl Sheet Flooring/Mastic	Off White Sparkled/Yellow	1
OO	Vinyl Sheet Flooring/Backing	Beige Speckled/Gray	1
PP	Basecove/Mastic	4" Gray/Tan	1

**CALIFORNIA STATE UNIVERSITY MARITIME ACADEMY
UPPER RESIDENCE HALL
COMPLETE ASBESTOS SAMPLING INVENTORY**

HOMOGENEOUS ID	MATERIAL	DESCRIPTION	# OF SAMPLES
QQ	Basecove/Mastic	4" Black/Tan	1
RR	Wallboard/Joint Compound	White/White, Untextured	1
SS	Brick/Mortar	Red/Gray, Exterior	2
TT	Concrete	Gray Foundation	2
UU	Sealant	White Door frame	2
VV	Sealant	Gray Aluminum Storefront	2
WW	Sealant	Gray Hard Window Frame	2
XX	Sealant	White Window Frame	2
YY	Basecove/Mastic	6" White/Tan	1
ZZ	Vinyl Floor Tile/Mastic	12" Off White/Black	1
A3	Acoustic Ceiling Panel	2'X4' White, Chicken Feet	1
B3	Basecove/Mastic	4" Tan/Tan	1
C3	Vinyl Sheet Flooring/Backing/Mastic	Gray Square Pattern/Gray/Yellow	1
D3	Mortar/Grout	White/White Frame	1
E3	Coating	Gray, Deck	1
F3	Roofing/Insulation	White & Black/Beige	3
G3	Base/Flashing	White & Black/Beige	1
H3	Sealant	White, Base	1
I3	Flue	Brown, Chimney	1

The above list are ALL the materials sampled and tested for asbestos. The positive materials are **in red**. The non-detected for asbestos materials are in black. If you cannot positively identify the material you need to impact through the above inventory and the map showing the sample locations, do not disturb and contact EH&S for further sampling or guidance. The materials not listed were not sampled and must be assumed asbestos containing until proven not by testing.



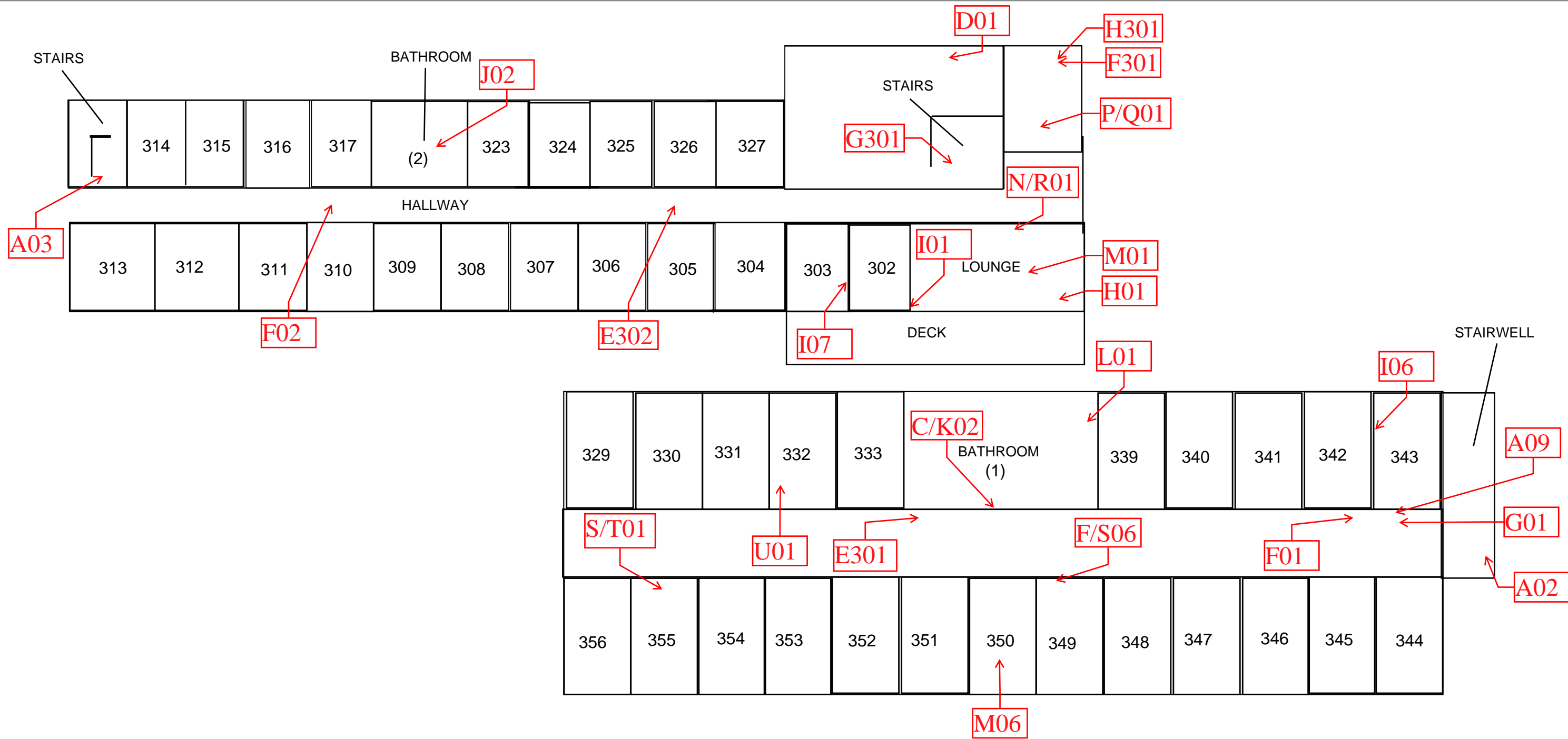
(UPPER RESIDENCE HALL, 1ST FLOOR)





(UPPER RESIDENCE HALL, 2ND FLOOR)





(UPPER RESIDENCE HALL, 3RD FLOOR)



**CALIFORNIA STATE UNIVERSITY MARITIME ACADEMY
UPPER RESIDENCE HALL
HAZARDOUS MATERIALS SUMMARY**

Positive XRF Lead Locations

ROOM	COMPONENT	SUBSTRATE	COLOR	CONDITION	PB	UNITS
Inside	Stairs	Metal	Black	Intact	15.3	mg/cm²
Inside	Stairs	Wood	Black	Intact	0.04	mg/cm ²
Inside	Door	Metal	Beige	Intact	0.01	mg/cm ²
Inside	Door Frame	Metal	Beige	Intact	26.2	mg/cm²
Inside	Door Frame	Metal	Beige	Intact	0.04	mg/cm ²
Inside	Door Frame	Metal	Beige	Intact	21.6	mg/cm²
Inside	Cabinet	Metal	Red	Intact	0.01	mg/cm ²
Inside	Wall	Ceramic	Beige	Intact	0.02	mg/cm ²
Inside	Pipe	Metal	White	Intact	0.01	mg/cm ²
Inside	Floor	Concrete	Black	Intact	0.04	mg/cm ²
Inside	Hand Rail	Metal	Black	Intact	13.9	mg/cm²
Inside	Post	Metal	Black	Intact	4.6	mg/cm²
Inside	Stairs	Wood	Black	Intact	0.02	mg/cm ²
Inside	Stairs	Concrete	Yellow	Intact	0.14	mg/cm ²
Inside	Door Frame	Metal	Beige	Intact	8.6	mg/cm²
Inside	Cabinet	Metal	Red	Intact	0.03	mg/cm ²
Inside	Wall	Metal	Beige	Intact	9.8	mg/cm²
Inside	Stairs	Metal	Black	Intact	20	mg/cm²
Inside	Hand Rail	Metal	Black	Intact	10.1	mg/cm²
Inside	Door Frame	Metal	Beige	Intact	15.6	mg/cm²
Inside	Door Frame	Metal	Beige	Intact	9.2	mg/cm²
Inside	Hand Rail	Metal	Black	Intact	24.8	mg/cm²
Inside	Post	Metal	Black	Intact	6.2	mg/cm²
Inside	Stairs	Metal	Black	Intact	18.4	mg/cm²
Inside	Stairs	Wood	Black	Intact	0.02	mg/cm ²
Inside	Stairs	Concrete	Yellow	Intact	0.21	mg/cm ²
Inside	Door Frame	Metal	Beige	Intact	0.24	mg/cm ²
Inside	Cabinet	Metal	Red	Intact	0.01	mg/cm ²
Inside	Wall	Metal	White	Intact	8.7	mg/cm²
Inside	Wall	Ceramic	Gray	Intact	0.01	mg/cm ²
Inside	Wall	Wood	Varnish	Intact	0.01	mg/cm ²
Inside	Door Frame	Metal	Beige	Intact	0.06	mg/cm ²

**CALIFORNIA STATE UNIVERSITY MARITIME ACADEMY
UPPER RESIDENCE HALL
HAZARDOUS MATERIALS SUMMARY**

Positive XRF Lead Locations

ROOM	COMPONENT	SUBSTRATE	COLOR	CONDITION	PB	UNITS
Inside	Radiator	Metal	Beige	Intact	0.1	mg/cm ²
Inside	Wall	Ceramic	White	Intact	0.02	mg/cm ²
Inside	Wall	Plaster	White	Intact	0.28	mg/cm ²
Inside	Wall	Concrete	White	Intact	0.02	mg/cm ²
Inside	Wall	Plaster	White	Intact	0.03	mg/cm ²
Inside	Wall	Plaster	White	Intact	0.1	mg/cm ²
Inside	Radiator	Concrete	Red	Intact	0.24	mg/cm ²
Inside	Radiator	Metal	Beige	Intact	0.03	mg/cm ²
Inside	Pipe	Metal	White	Intact	0.01	mg/cm ²
Inside	Ceiling	Concrete	Beige	Intact	0.01	mg/cm ²
Inside	Soffit	Plaster	Beige	Deteriorated	0.01	mg/cm ²
Inside	Wall	Plaster	White	Intact	0.1	mg/cm ²
Inside	Radiator	Metal	Red	Intact	0.12	mg/cm ²
Inside	Column	Plaster	White	Intact	0.09	mg/cm ²
Inside	Wall	Ceramic	White	Intact	0.05	mg/cm ²
Inside	Radiator	Metal	White	Intact	0.01	mg/cm ²
Inside	Stairs	Metal	Black	Intact	8.9	mg/cm²
Inside	Radiator	Metal	Red	Intact	0.16	mg/cm ²
Inside	Walls	Drywall	White	Intact	0.12	mg/cm ²
Inside	Walls	Cinder Block	White	Intact	0.1	mg/cm ²
Inside	Door Trim	Metal	White	Intact	0.01	mg/cm ²
Inside	Wall	Drywall	White	Intact	0.09	mg/cm ²
Inside	Wall	Cinder Block	White	Intact	0.14	mg/cm ²
Inside	Radiator	Metal	Red	Intact	0.23	mg/cm ²
Inside	Wall	Plaster	White	Intact	0.01	mg/cm ²
Inside	Wall	Cinder Block	White	Intact	0.08	mg/cm ²
Inside	Wall	Cinder Block	White	Intact	0.12	mg/cm ²
Inside	Wall	Drywall	White	Intact	0.01	mg/cm ²
Inside	Wall	Cinder Block	Varnish	Intact	0.08	mg/cm ²
Inside	Wall	Drywall	Varnish	Intact	0.1	mg/cm ²
Inside	Wall	Wood	Varnish	Intact	0.02	mg/cm ²
Inside	Wall	Cinder Block	White	Intact	0.11	mg/cm ²

CALIFORNIA STATE UNIVERSITY MARITIME ACADEMY
UPPER RESIDENCE HALL
 HAZARDOUS MATERIALS SUMMARY

Positive XRF Lead Locations

ROOM	COMPONENT	SUBSTRATE	COLOR	CONDITION	PB	UNITS
Inside	Hand Rail	Metal	Black	Intact	9.2	mg/cm²
Inside	Post	Metal	Black	Intact	0.04	mg/cm ²
Inside	Wall	Drywall	White	Intact	0.06	mg/cm ²
Inside	Wall	Drywall	White	Intact	0.06	mg/cm ²
Inside	Radiator	Metal	Red	Intact	0.4	mg/cm ²
Inside	Wall	Cinder Block	White	Intact	0.09	mg/cm ²
Roof	Flashing	Metal	White	Intact	0.04	mg/cm ²
Roof	Pipe Covering	Metal	White	Intact	68.5	mg/cm²
Outside	Door Frame	Metal	Black	Intact	10.8	mg/cm²
Outside	Pipe	Metal	Red	Intact	5.3	mg/cm²

Bold = Lead Based

CALIFORNIA STATE UNIVERSITY MARITIME ACADEMY
UPPER RESIDENCE HALL
 EQO RNVG'Z TH'NGCF 'UCO RNVG'K XGP VQT[

READING NO.	BUILDING	ROOM	COMPONENT	SUBSTRATE	COLOR	CONDITION	RESULTS	PbC	UNITS
782			SHUTTER_CAL					0.71	cps
783			CALIBRATE				Positive	1	mg/cm ²
785			CALIBRATE				Positive	1	mg/cm ²
786			CALIBRATE				Positive	1	mg/cm ²
787	UPPER RES	INSIDE	WALL	CONCRETE	BEIGE	INTACT	Negative	0	mg/cm ²
789	UPPER RES	INSIDE	WALL	CONCRETE	WHITE	INTACT	Negative	0	mg/cm ²
790	UPPER RES	INSIDE	HAND RAIL	METAL	BLACK	INTACT	Positive	9.2	mg/cm ²
791	UPPER RES	INSIDE	POST	METAL	BLACK	INTACT	Negative	0.04	mg/cm ²
792	UPPER RES	INSIDE	STAIRS	METAL	BLACK	INTACT	Positive	15.3	mg/cm ²
793	UPPER RES	INSIDE	STAIRS	WOOD	BLACK	INTACT	Negative	0.04	mg/cm ²
794	UPPER RES	INSIDE	PIPE	METAL	WHITE	INTACT	Negative	0	mg/cm ²
795	UPPER RES	INSIDE	DOOR	METAL	BEIGE	INTACT	Negative	0.01	mg/cm ²
796	UPPER RES	INSIDE	DOOR FRAME	METAL	BEIGE	INTACT	Positive	26.2	mg/cm ²
797	UPPER RES	INSIDE	DOOR FRAME	METAL	BEIGE	INTACT	Negative	0.04	mg/cm ²
798	UPPER RES	INSIDE	DOOR FRAME	METAL	BEIGE	INTACT	Positive	21.6	mg/cm ²
799	UPPER RES	INSIDE	DOOR	METAL	BEIGE	INTACT	Negative	0	mg/cm ²
800	UPPER RES	INSIDE	WALL	CONCRETE	BLUE	INTACT	Negative	0	mg/cm ²
801	UPPER RES	INSIDE	WINDOW SILL	WOOD	WHITE	INTACT	Negative	0	mg/cm ²
803	UPPER RES	INSIDE	CEILING	STUCCO	WHITE	INTACT	Negative	0	mg/cm ²
804	UPPER RES	INSIDE	CABINET	METAL	RED	INTACT	Negative	0.01	mg/cm ²
805	UPPER RES	INSIDE	WALL	CONCRETE	BEIGE	INTACT	Negative	0	mg/cm ²
806	UPPER RES	INSIDE	WALL	CERAMIC	BEIGE	INTACT	Negative	0.02	mg/cm ²
807	UPPER RES	INSIDE	WALL	CERAMIC	RED	INTACT	Negative	0	mg/cm ²
809	UPPER RES	INSIDE	PIPE	METAL	WHITE	INTACT	Negative	0.01	mg/cm ²
810	UPPER RES	INSIDE	FLOOR	CONCRETE	BLACK	INTACT	Negative	0.04	mg/cm ²

This data is a screening of lead levels and provides results that are generally representative of typical conditions, but are not inclusive of all painted/coated surfaces at the Project Site.

CALIFORNIA STATE UNIVERSITY MARITIME ACADEMY
UPPER RESIDENCE HALL
 EQO RNVG'Z TH'NGCF 'UCO RNVG'K XGP VQT[

READING NO.	BUILDING	ROOM	COMPONENT	SUBSTRATE	COLOR	CONDITION	RESULTS	PbC	UNITS
811	UPPER RES	INSIDE	FLOOR	CONCRETE	BLACK	INTACT	Negative	0	mg/cm ²
812	UPPER RES	INSIDE	HAND RAIL	METAL	BLACK	INTACT	Positive	13.9	mg/cm ²
813	UPPER RES	INSIDE	POST	METAL	BLACK	INTACT	Positive	4.6	mg/cm ²
814	UPPER RES	INSIDE	STAIRS	WOOD	BLACK	INTACT	Negative	0.02	mg/cm ²
815	UPPER RES	INSIDE	STAIRS	CONCRETE	YELLOW	INTACT	Negative	0.14	mg/cm ²
816	UPPER RES	INSIDE	WALL	CONCRETE	WHITE	INTACT	Negative	0	mg/cm ²
817	UPPER RES	INSIDE	DOOR	WOOD	BEIGE	INTACT	Negative	0	mg/cm ²
818	UPPER RES	INSIDE	DOOR FRAME	METAL	BEIGE	INTACT	Positive	8.6	mg/cm ²
821	UPPER RES	INSIDE	CABINET	METAL	RED	INTACT	Negative	0.03	mg/cm ²
822	UPPER RES	INSIDE	DOOR	METAL	BEIGE	INTACT	Negative	0	mg/cm ²
823	UPPER RES	INSIDE	DOOR FRAME	WOOD	BEIGE	INTACT	Negative	0	mg/cm ²
824	UPPER RES	INSIDE	WALL	CONCRETE	BLUE	INTACT	Negative	0	mg/cm ²
825	UPPER RES	INSIDE	WALL	METAL	BEIGE	INTACT	Positive	9.8	mg/cm ²
826	UPPER RES	INSIDE	STAIRS	METAL	BLACK	INTACT	Positive	20	mg/cm ²
827	UPPER RES	INSIDE	HAND RAIL	METAL	BLACK	INTACT	Positive	10.1	mg/cm ²
828	UPPER RES	INSIDE	HATCH	METAL	GRAY	INTACT	Negative	0	mg/cm ²
830	UPPER RES	INSIDE	WALL	CONCRETE	WHITE	INTACT	Negative	0	mg/cm ²
831	UPPER RES	INSIDE	DOOR FRAME	METAL	BEIGE	INTACT	Positive	15.6	mg/cm ²
832	UPPER RES	INSIDE	DOOR	METAL	BEIGE	INTACT	Negative	0	mg/cm ²
833	UPPER RES	INSIDE	DOOR FRAME	METAL	BEIGE	INTACT	Positive	9.2	mg/cm ²
834	UPPER RES	INSIDE	HAND RAIL	METAL	BLACK	INTACT	Positive	24.8	mg/cm ²
835	UPPER RES	INSIDE	POST	METAL	BLACK	INTACT	Positive	6.2	mg/cm ²
836	UPPER RES	INSIDE	STAIRS	METAL	BLACK	INTACT	Positive	18.4	mg/cm ²
837	UPPER RES	INSIDE	STAIRS	WOOD	BLACK	INTACT	Negative	0.02	mg/cm ²
838	UPPER RES	INSIDE	STAIRS	CONCRETE	BLACK	INTACT	Negative	0	mg/cm ²

This data is a screening of lead levels and provides results that are generally representative of typical conditions, but are not inclusive of all painted/coated surfaces at the Project Site.

**CALIFORNIA STATE UNIVERSITY MARITIME ACADEMY
UPPER RESIDENCE HALL
EQO RNVG'Z TH'NGCF 'UCO RNVG'K XGP VQT[**

READING NO.	BUILDING	ROOM	COMPONENT	SUBSTRATE	COLOR	CONDITION	RESULTS	PbC	UNITS
839	UPPER RES	INSIDE	STAIRS	CONCRETE	YELLOW	INTACT	Negative	0.21	mg/cm ²
840	UPPER RES	INSIDE	DOOR FRAME	METAL	BEIGE	INTACT	Negative	0.24	mg/cm ²
841	UPPER RES	INSIDE	CABINET	METAL	RED	INTACT	Negative	0.01	mg/cm ²
842	UPPER RES	INSIDE	CABINET	METAL	BEIGE	INTACT	Negative	0	mg/cm ²
843	UPPER RES	INSIDE	WALL	DRYWALL	BEIGE	INTACT	Negative	0	mg/cm ²
844	UPPER RES	INSIDE	WALL PANEL	PLASTIC	BEIGE	INTACT	Negative	0	mg/cm ²
845	UPPER RES	INSIDE	WINDOW SILL	PLASTER	WHITE	INTACT	Negative	0	mg/cm ²
846	UPPER RES	INSIDE	COLUMN	CONCRETE	WHITE	INTACT	Negative	0	mg/cm ²
847	UPPER RES	INSIDE	WALL	METAL	WHITE	INTACT	Positive	8.7	mg/cm ²
848	UPPER RES	INSIDE	WINDOW FRAME	METAL	BEIGE	INTACT	Negative	0	mg/cm ²
849	UPPER RES	INSIDE	WALL	DRYWALL	BEIGE	INTACT	Negative	0	mg/cm ²
850	UPPER RES	INSIDE	WALL	PLASTER	WHITE	INTACT	Negative	0	mg/cm ²
851	UPPER RES	INSIDE	COLUMN	DRYWALL	WHITE	INTACT	Negative	0	mg/cm ²
852	UPPER RES	INSIDE	WALL	CERAMIC	GRAY	INTACT	Negative	0.01	mg/cm ²
903			CALIBRATE				Negative	0.8	mg/cm ²
904			CALIBRATE				Negative	0.8	mg/cm ²
905			CALIBRATE				Negative	0.8	mg/cm ²
906	UPPER RES	INSIDE	WALL	CONCRETE	WHITE	INTACT	Negative	0	mg/cm ²
907	UPPER RES	INSIDE	WALL	PLASTER	WHITE	INTACT	Negative	0	mg/cm ²
908	UPPER RES	INSIDE	WALL	WOOD	VARNISH	INTACT	Negative	0.01	mg/cm ²
909	UPPER RES	INSIDE	DOOR	WOOD	VARNISH	INTACT	Negative	0	mg/cm ²
910	UPPER RES	INSIDE	DOOR FRAME	METAL	BEIGE	INTACT	Negative	0.06	mg/cm ²
911	UPPER RES	INSIDE	RADIATOR	METAL	BEIGE	INTACT	Negative	0.1	mg/cm ²
912	UPPER RES	INSIDE	WINDOW	VINYL	WHITE	INTACT	Negative	0	mg/cm ²
913	UPPER RES	INSIDE	WALL	CERAMIC	WHITE	INTACT	Negative	0.02	mg/cm ²

This data is a screening of lead levels and provides results that are generally representative of typical conditions, but are not inclusive of all painted/coated surfaces at the Project Site.

CALIFORNIA STATE UNIVERSITY MARITIME ACADEMY
UPPER RESIDENCE HALL
 EQO RNVG'Z TH'NGCF 'UCO RNVG'K XGP VQT[

READING NO.	BUILDING	ROOM	COMPONENT	SUBSTRATE	COLOR	CONDITION	RESULTS	PbC	UNITS
914	UPPER RES	INSIDE	WALL	CERAMIC	BEIGE	INTACT	Negative	0	mg/cm ²
915	UPPER RES	INSIDE	WALL	CERAMIC	RED	INTACT	Negative	0	mg/cm ²
916	UPPER RES	INSIDE	FLOOR	CERAMIC	WHITE	INTACT	Negative	0	mg/cm ²
917	UPPER RES	INSIDE	CEILING	PLASTER	WHITE	INTACT	Negative	0	mg/cm ²
918	UPPER RES	INSIDE	WALL	PLASTER	WHITE	INTACT	Negative	0.28	mg/cm ²
919	UPPER RES	INSIDE	WALL	CONCRETE	WHITE	INTACT	Negative	0.02	mg/cm ²
920	UPPER RES	INSIDE	WALL	PLASTER	WHITE	INTACT	Negative	0.03	mg/cm ²
921	UPPER RES	INSIDE	WALL	PLASTER	WHITE	INTACT	Negative	0.1	mg/cm ²
922	UPPER RES	INSIDE	WALL	CONCRETE	WHITE	INTACT	Negative	0	mg/cm ²
923	UPPER RES	INSIDE	RADIATOR	CONCRETE	RED	INTACT	Negative	0.24	mg/cm ²
925			CALIBRATE				Negative	0.7	mg/cm ²
926			CALIBRATE				Negative	0.8	mg/cm ²
927			CALIBRATE				Negative	0.8	mg/cm ²
928			SHUTTER_CAL					0.73	cps
929			CALIBRATE				Negative	0.9	mg/cm ²
930			CALIBRATE				Negative	0.8	mg/cm ²
931			CALIBRATE				Negative	0.9	mg/cm ²
932	UPPER RES	INSIDE	WALL	CERAMIC	BEIGE	INTACT	Negative	0	mg/cm ²
933	UPPER RES	INSIDE	WALL	CERAMIC	RED	INTACT	Negative	0	mg/cm ²
934	UPPER RES	INSIDE	WALL	CERAMIC	TAN	INTACT	Negative	0	mg/cm ²
935	UPPER RES	INSIDE	FLOOR	CERAMIC	BEIGE	INTACT	Negative	0	mg/cm ²
937	UPPER RES	INSIDE	RADIATOR	METAL	BEIGE	INTACT	Negative	0.03	mg/cm ²
938	UPPER RES	INSIDE	CEILING	PLASTER	BEIGE	INTACT	Negative	0	mg/cm ²
940	UPPER RES	INSIDE	PIPE	METAL	WHITE	INTACT	Negative	0.01	mg/cm ²
941	UPPER RES	INSIDE	WALL	DRYWALL	WHITE	INTACT	Negative	0	mg/cm ²

This data is a screening of lead levels and provides results that are generally representative of typical conditions, but are not inclusive of all painted/coated surfaces at the Project Site.

CALIFORNIA STATE UNIVERSITY MARITIME ACADEMY
UPPER RESIDENCE HALL
 EQO RNVG'Z TH'NGCF 'UCO RNVG'K XGP VQT[

READING NO.	BUILDING	ROOM	COMPONENT	SUBSTRATE	COLOR	CONDITION	RESULTS	PbC	UNITS
942	UPPER RES	INSIDE	WALL	CONCRETE	WHITE	INTACT	Negative	0	mg/cm ²
943	UPPER RES	INSIDE	CEILING	CONCRETE	BEIGE	INTACT	Negative	0.01	mg/cm ²
944	UPPER RES	INSIDE	SOFFIT	PLASTER	BEIGE	DETERIORATED	Negative	0.01	mg/cm ²
945	UPPER RES	INSIDE	WALL	PLASTER	WHITE	INTACT	Negative	0	mg/cm ²
946	UPPER RES	INSIDE	WALL	CONCRETE	WHITE	INTACT	Negative	0	mg/cm ²
947	UPPER RES	INSIDE	WALL	CONCRETE	WHITE	INTACT	Negative	0	mg/cm ²
948	UPPER RES	INSIDE	WALL	CONCRETE	WHITE	INTACT	Negative	0	mg/cm ²
949	UPPER RES	INSIDE	WALL	PLASTER	WHITE	INTACT	Negative	0	mg/cm ²
951	UPPER RES	INSIDE	WALL	PLASTER	WHITE	INTACT	Negative	0.1	mg/cm ²
952	UPPER RES	INSIDE	WALL	CONCRETE	WHITE	INTACT	Negative	0	mg/cm ²
953	UPPER RES	INSIDE	RADIATOR	METAL	RED	INTACT	Negative	0.12	mg/cm ²
954			CALIBRATE				Negative	0.8	mg/cm ²
955			CALIBRATE				Negative	0.9	mg/cm ²
956			CALIBRATE				Negative	0.9	mg/cm ²
1026			SHUTTER_CAL					0.63	cps
1027			CALIBRATE				Positive	1	mg/cm ²
1028			CALIBRATE				Negative	0.9	mg/cm ²
1029			CALIBRATE				Negative	0	mg/cm ²
1030			CALIBRATE				Positive	1.1	mg/cm ²
1032	UPPER RES	INSIDE	WALL	DRYWALL	WHITE	INTACT	Negative	0	mg/cm ²
1033	UPPER RES	INSIDE	WALL	BRICK	WHITE	INTACT	Negative	0	mg/cm ²
1035	UPPER RES	INSIDE	WALL	CINDER BLOCK	WHITE	INTACT	Negative	0	mg/cm ²
1036	UPPER RES	INSIDE	WALL	PLASTER	WHITE	INTACT	Negative	0	mg/cm ²
1037	UPPER RES	INSIDE	COLUMN	PLASTER	WHITE	INTACT	Negative	0.09	mg/cm ²
1038	UPPER RES	INSIDE	DOOR	WOOD	WHITE	INTACT	Negative	0	mg/cm ²

This data is a screening of lead levels and provides results that are generally representative of typical conditions, but are not inclusive of all painted/coated surfaces at the Project Site.

CALIFORNIA STATE UNIVERSITY MARITIME ACADEMY
UPPER RESIDENCE HALL
 EQO RNVG'Z TH'NGCF 'UCO RNVG'K XGP VQT[

READING NO.	BUILDING	ROOM	COMPONENT	SUBSTRATE	COLOR	CONDITION	RESULTS	PbC	UNITS
1039	UPPER RES	INSIDE	DOOR FRAME	WOOD	WHITE	INTACT	Negative	0	mg/cm ²
1040	UPPER RES	INSIDE	DOOR JAMB	WOOD	WHITE	INTACT	Negative	0	mg/cm ²
1041	UPPER RES	INSIDE	DOOR TRIM	WOOD	WHITE	INTACT	Negative	0	mg/cm ²
1043	UPPER RES	INSIDE	WINDOW SILL	METAL	WHITE	INTACT	Negative	0	mg/cm ²
1044	UPPER RES	INSIDE	DOOR	WOOD	VARNISH	INTACT	Negative	0	mg/cm ²
1046	UPPER RES	INSIDE	WALL	CERAMIC	WHITE	INTACT	Negative	0.05	mg/cm ²
1048	UPPER RES	INSIDE	FLOOR	CERAMIC	WHITE	INTACT	Negative	0	mg/cm ²
1049	UPPER RES	INSIDE	BASEBOARD	PLASTIC	WHITE	INTACT	Negative	0	mg/cm ²
1050	UPPER RES	INSIDE	CABINET	WOOD	VARNISH	INTACT	Negative	0	mg/cm ²
1051	UPPER RES	INSIDE	CABINET	WOOD	VARNISH	INTACT	Negative	0	mg/cm ²
1052	UPPER RES	INSIDE	RADIATOR	PLASTIC	WHITE_G	INTACT	Negative	0	mg/cm ²
1053	UPPER RES	INSIDE	CABINET	WOOD	WHITE	INTACT	Negative	0	mg/cm ²
1054	UPPER RES	INSIDE	RADIATOR	METAL	WHITE	INTACT	Negative	0.01	mg/cm ²
1055	UPPER RES	INSIDE	STAIRS	METAL	BLACK	INTACT	Positive	8.9	mg/cm ²
1056	UPPER RES	INSIDE	WALL	BRICK	WHITE	INTACT	Negative	0	mg/cm ²
1057	UPPER RES	INSIDE	WALL	PLASTER	WHITE	INTACT	Negative	0	mg/cm ²
1058	UPPER RES	INSIDE	WALL	CINDER BLOCK	WHITE	INTACT	Negative	0	mg/cm ²
1059	UPPER RES	INSIDE	WINDOW SILL	WOOD	WHITE	INTACT	Negative	0	mg/cm ²
1061	UPPER RES	INSIDE	WINDOW FRAME	WOOD	WHITE	INTACT	Negative	0	mg/cm ²
1062	UPPER RES	INSIDE	WALLS	BRICK	WHITE	INTACT	Negative	0	mg/cm ²
1063	UPPER RES	INSIDE	RADIATOR	METAL	RED	INTACT	Negative	0.16	mg/cm ²
1064	UPPER RES	INSIDE	WALLS	DRYWALL	WHITE	INTACT	Negative	0.12	mg/cm ²
1065	UPPER RES	INSIDE	WALLS	CINDER BLOCK	WHITE	INTACT	Negative	0.1	mg/cm ²
1066	UPPER RES	INSIDE	DOOR	WOOD	VARNISH	INTACT	Negative	0	mg/cm ²
1067	UPPER RES	INSIDE	DOOR TRIM	METAL	WHITE	INTACT	Negative	0.01	mg/cm ²

This data is a screening of lead levels and provides results that are generally representative of typical conditions, but are not inclusive of all painted/coated surfaces at the Project Site.

CALIFORNIA STATE UNIVERSITY MARITIME ACADEMY
UPPER RESIDENCE HALL
 EQO RNVG'Z TH'NGCF 'UCO RNVG'K XGP VQT[

READING NO.	BUILDING	ROOM	COMPONENT	SUBSTRATE	COLOR	CONDITION	RESULTS	PbC	UNITS
1068	UPPER RES	INSIDE	WALL	BRICK	WHITE	INTACT	Negative	0	mg/cm ²
1071	UPPER RES	INSIDE	WALL	DRYWALL	WHITE	INTACT	Negative	0.09	mg/cm ²
1072	UPPER RES	INSIDE	WALL	CINDER BLOCK	WHITE	INTACT	Negative	0.14	mg/cm ²
1073	UPPER RES	INSIDE	RADIATOR	METAL	RED	INTACT	Negative	0.23	mg/cm ²
1074	UPPER RES	INSIDE	DOOR	WOOD	VARNISH	INTACT	Negative	0	mg/cm ²
1075	UPPER RES	INSIDE	DOOR	WOOD	VARNISH	INTACT	Negative	0	mg/cm ²
1076	UPPER RES	INSIDE	WALL	PLASTER	WHITE	INTACT	Negative	0.01	mg/cm ²
1077	UPPER RES	INSIDE	WALL	CINDER BLOCK	WHITE	INTACT	Negative	0.08	mg/cm ²
1078	UPPER RES	INSIDE	WALL	CINDER BLOCK	WHITE	INTACT	Negative	0.12	mg/cm ²
1080	UPPER RES	INSIDE	WALL	DRYWALL	WHITE	INTACT	Negative	0.01	mg/cm ²
1081	UPPER RES	INSIDE	WALL	BRICK	WHITE	INTACT	Negative	0	mg/cm ²
1082	UPPER RES	INSIDE	DOOR	WOOD	VARNISH	INTACT	Negative	0	mg/cm ²
1083	UPPER RES	INSIDE	DOOR	WOOD	VARNISH	INTACT	Negative	0	mg/cm ²
1085	UPPER RES	INSIDE	WALL	CINDER BLOCK	VARNISH	INTACT	Negative	0.08	mg/cm ²
1086	UPPER RES	INSIDE	WALL	BRICK	VARNISH	INTACT	Negative	0	mg/cm ²
1087	UPPER RES	INSIDE	WALL	DRYWALL	VARNISH	INTACT	Negative	0.1	mg/cm ²
1088	UPPER RES	INSIDE	WINDOW SILL	METAL	BROWN	INTACT	Negative	0	mg/cm ²
1089	UPPER RES	INSIDE	WALL	WOOD	VARNISH	INTACT	Negative	0.02	mg/cm ²
1091	UPPER RES	INSIDE	DOOR	WOOD	VARNISH	INTACT	Negative	0	mg/cm ²
1092	UPPER RES	INSIDE	WALL	CINDER BLOCK	WHITE	INTACT	Negative	0.11	mg/cm ²
1093	UPPER RES	INSIDE	WALL	DRYWALL	WHITE	INTACT	Negative	0.06	mg/cm ²
1094	UPPER RES	INSIDE	WALL	BRICK	WHITE	INTACT	Negative	0	mg/cm ²
1095	UPPER RES	INSIDE	DOOR	WOOD	VARNISH	INTACT	Negative	0	mg/cm ²
1096	UPPER RES	INSIDE	WALL	DRYWALL	WHITE	INTACT	Negative	0.06	mg/cm ²
1097	UPPER RES	INSIDE	WALL	BRICK	WHITE	INTACT	Negative	0	mg/cm ²

This data is a screening of lead levels and provides results that are generally representative of typical conditions, but are not inclusive of all painted/coated surfaces at the Project Site.

CALIFORNIA STATE UNIVERSITY MARITIME ACADEMY
UPPER RESIDENCE HALL
 EQO RNVG'Z TH'NGCF 'UCO RNVG'K XGP VQT[

READING NO.	BUILDING	ROOM	COMPONENT	SUBSTRATE	COLOR	CONDITION	RESULTS	PbC	UNITS
1098	UPPER RES	INSIDE	WALL	CINDER BLOCK	WHITE	INTACT	Negative	0	mg/cm ²
1099	UPPER RES	INSIDE	RADIATOR	METAL	RED	INTACT	Negative	0.4	mg/cm ²
1100	UPPER RES	INSIDE	WALL	DRYWALL	WHITE	INTACT	Negative	0	mg/cm ²
1101	UPPER RES	INSIDE	WALL	BRICK	WHITE	INTACT	Negative	0	mg/cm ²
1102	UPPER RES	INSIDE	WALL	CINDER BLOCK	WHITE	INTACT	Negative	0.09	mg/cm ²
1103	UPPER RES	INSIDE	DOOR	WOOD	VARNISH	INTACT	Negative	0	mg/cm ²
1104	UPPER RES	Roof	FLASHING	METAL	WHITE	INTACT	Negative	0.04	mg/cm ²
1105	UPPER RES	Roof	PIPE COVERING	METAL	WHITE	INTACT	Positive	68.5	mg/cm ²
1107			CALIBRATE				Negative	0.7	mg/cm ²
1108			CALIBRATE				Negative	0.6	mg/cm ²
1109			CALIBRATE				Negative	0.4	mg/cm ²
1			SHUTTER_CAL					0.72	cps
2			CALIBRATE				Positive	1	mg/cm ²
3			CALIBRATE				Positive	1.1	mg/cm ²
4			CALIBRATE				Positive	1.1	mg/cm ²
99	UPPER RES	OUTSIDE	DOOR FRAME	METAL	RED	INTACT	Negative	0	mg/cm ²
100	UPPER RES	OUTSIDE	DOOR FRAME	METAL	BLACK	INTACT	Positive	10.8	mg/cm ²
102	UPPER RES	OUTSIDE	DOOR	VINYL	BLACK	INTACT	Negative	0	mg/cm ²
103	UPPER RES	OUTSIDE	BEAM	METAL	RED	INTACT	Negative	0	mg/cm ²
104	UPPER RES	OUTSIDE	PIPE	METAL	RED	INTACT	Positive	5.3	mg/cm ²
105			CALIBRATE				Positive	1	mg/cm ²
112			CALIBRATE				Positive	1.1	mg/cm ²
113			CALIBRATE				Positive	1	mg/cm ²
114			CALIBRATE				Positive	1.2	mg/cm ²

The above list are ALL the materials sampled and tested by XRF for lead. The positive materials are in red. The non-detected for lead materials are in black. If you cannot positively identify the material you need to impact through the above inventory, do not disturb and contact EH&S for further sampling or guidance. The materials not listed were not sampled and must be assumed lead containing until proven not by testing