

HOUSEKEEPING

- How was the first week of tutoring/SI??
- Training Hours: Should be a total of 7.5 for training (1.5 on "Friday" and 6 on "Saturday")
- If you are planning on doing class visits and the professor has emailed back, it is up to you to follow up regarding when.
- For those of you who aren't in the system yet, please email me a weekly timesheet. Likewise if you do something that isn't in passport (except staff meetings). (SIs please use google doc for weekly hours)
- I can create same-day appts! Just email me ASAP
- Drop-in Hours start this week!! Remember to block time for "drop in" in passport, open the kiosk, and fill out appt reports.
NEW: sign in stands
- Winston Grady: Winston.Grady@humboldt.edu, union rep





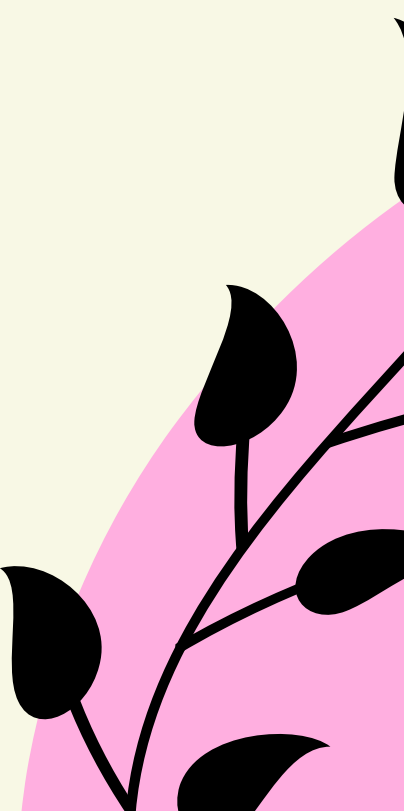
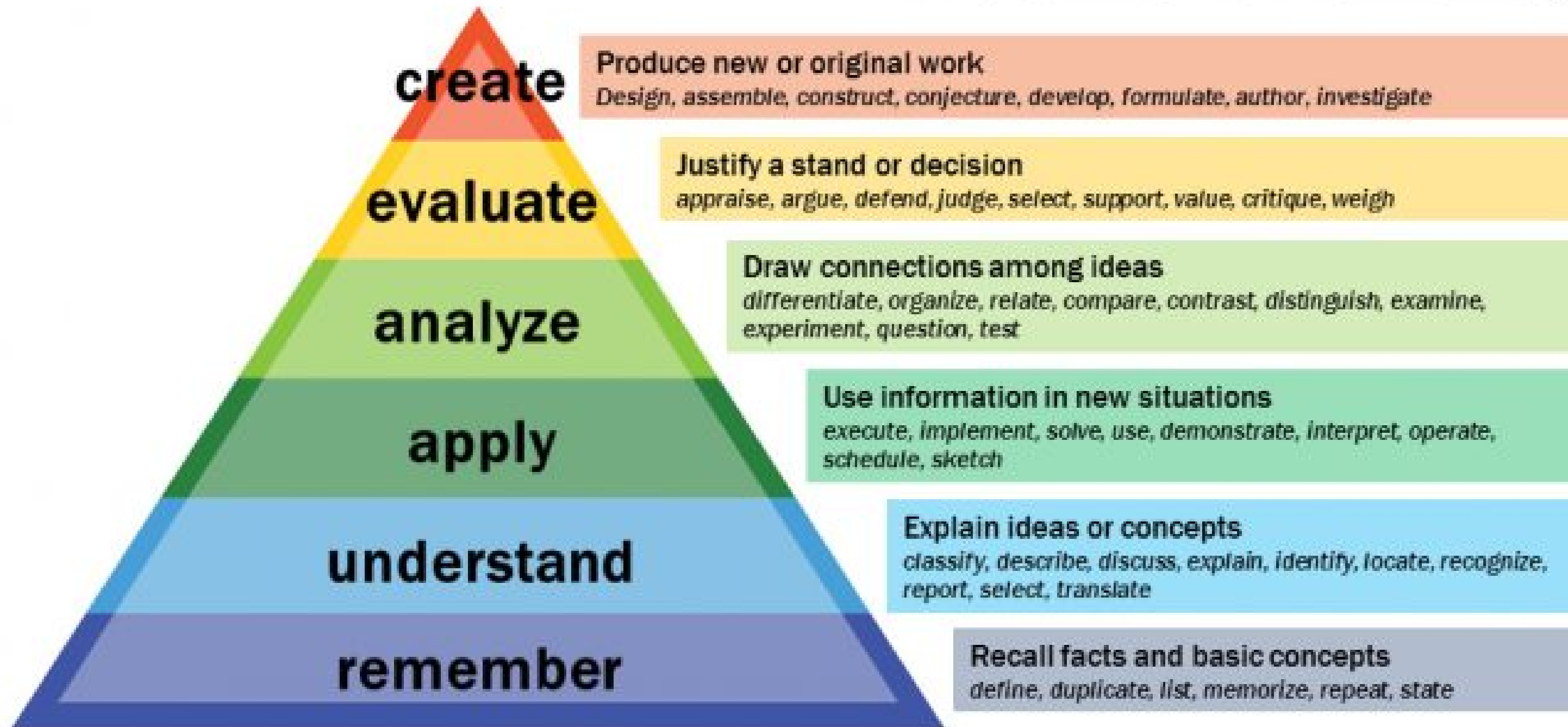
BLOOM'S TAXONOMY

Staff Meeting 9/12 & 9/13



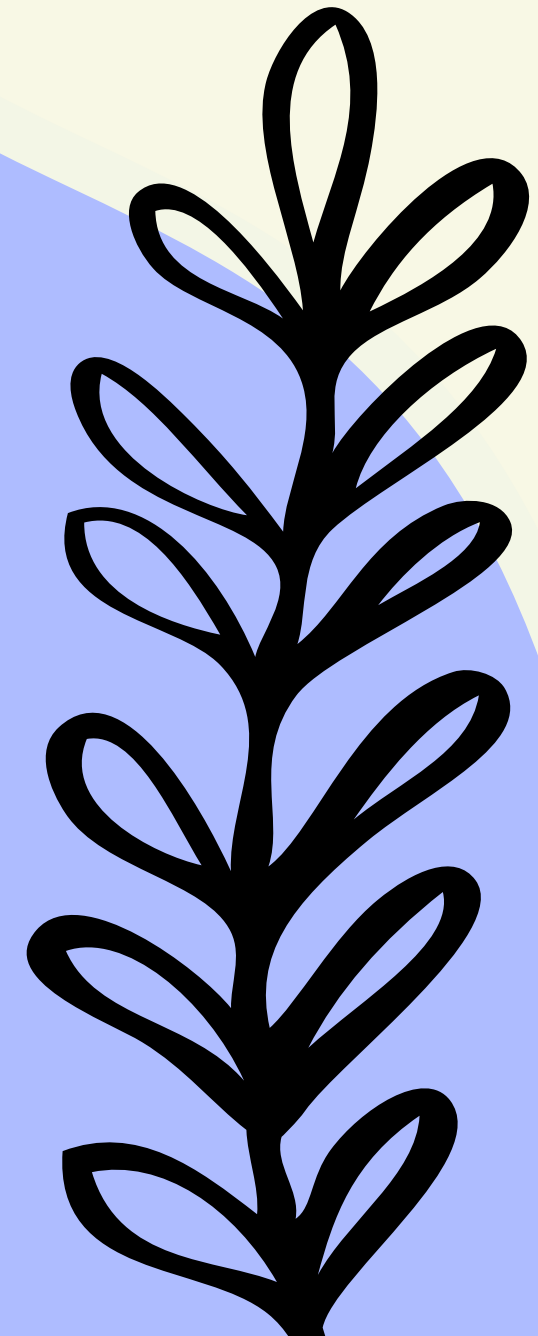
WHAT IS IT?

Bloom's Taxonomy



EXAMPLES

- **Remember:** List the items that Goldilocks used in the house
- **Understand:** Explain why Goldilocks liked Baby Bear's chair the best
- **Apply:** Demonstrate what Goldilocks would use if she came to your house
- **Analyze:** Compare this story to a real life event
- **Evaluate:** Judge whether Goldilocks is a good or bad character. Why?
- **Create:** Write your own version of Goldilocks using different characters and a different setting. What is different and why?



PROVIDE SOME REAL CLASSROOM EXAMPLES OF EACH LEVEL

- Remember:
- Understand:
- Apply:
- Analyze:
- Evaluate:
- Create:



PROVIDE SOME REAL CLASSROOM EXAMPLES OF EACH LEVEL

- Remember:
- Understand:
- Apply:
- Analyze:
- Evaluate:
- Create:

**WHAT ARE THE MOST
COMMON LEVELS OF
LEARNING IN YOUR OWN
COLLEGE EXPERIENCE
THUS FAR?**



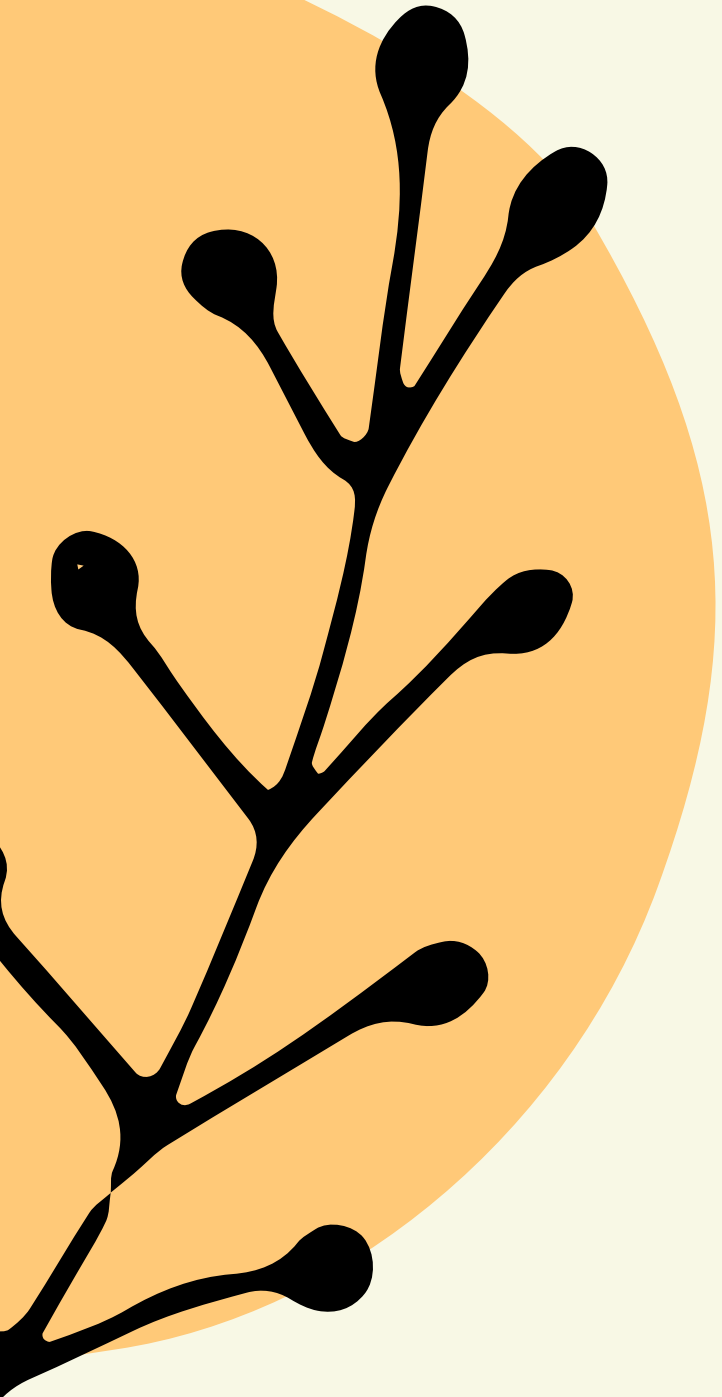


HOW DOES TUTORING FIT?

- What are some learning activities you have used and which category do they fall in?
- Based on that, where do most of your learning activities in tutoring and SI fall?
- How can you use Bloom's taxonomy in your own sessions?
- How can you use Bloom's taxonomy in your own educational journey?

LEARNING ACTIVITIES

What types of activities could you use in a tutoring or SI session to help your tutees feel comfortable learning in the next level?



IMPORTANT TIPS TO REMEMBER

- Bloom's taxonomy assesses learning activities, not a person
- No level is "bad" they are just layered, and you don't want to stay stagnant at one level
- You can't jump from memorizing to creating in one day
- Even if a prompt calls for a lower level, going up a level or two can greatly help with learning



